

GILL RED ANGUS



Lot 2

Fall Bull & Female Sale

DECEMBER 14, 2022

1:00 PM MT | At the Ranch Near Timber Lake, South Dakota

Selling

- 129 Coming 2-Year-Old Bulls
- 195 Commercial Bred Heifers



Fall Bull & Female Sale

DECEMBER 14, 2022

1:00 PM MT
At the Ranch
Timber Lake, SD

www.GillRedAngus.com

RANCH HEADQUARTERS

Gill Red Angus
13138 256th Ave.
Timber Lake, SD 57656
www.gillredangus.com

MARKETING, BUSINESS & COW HERD MANAGER

Bryan & Kristen Gill
Cell • 701-730-0134
E-Mail: bigredgenetics@hotmail.com

RANCH MANAGER

Brent & Emily Gill
Cell • 605-848-3722
Larry & Janet Gill
Home • 605-865-3288
Cell • 605-848-1996

SALE DATE & TIME

Wednesday, December 14, 2022 • 1:00 p.m. MT

SALE LOCATION

Gill Red Angus sale facility • On the ranch
Timber Lake, South Dakota

DIRECTIONS TO SALE

Gill Red Angus Ranch is located 120 miles south of Bismarck, ND, 34 miles west of Mobridge, SD and 6 miles east of Timber Lake, SD.

If traveling east from Timber Lake: Go 6 miles on Highway 20 to ranch turnoff. Turn left, go north 1.5 miles. Turn left, go west ½ mile.

If traveling west from Mobridge or Bismarck: From Highway 63 and Highway 20 Junction, go 8.5 miles west to ranch turnoff. Turn right, go north 1.5 miles. Turn left, go west ½ mile.

ACCOMODATIONS

Timber Lake, South Dakota
The Limit Lodge – 1-605-865-3526
Mobridge, South Dakota
Wrangler Motor Inn • 605-845-3641
Grand River Casino • 800-475-3321

LUNCH

Salads, buns, and chips provided by Country Market. Crop 1 Insurance will be grilling Gill Red Angus burgers.

VIDEO

A video of each lot will be on both www.dvauction.com and www.gillredangus.com. The sale will be a video sale. The bulls & heifers will not be run through a sale ring, but instead of a sale ring, several big screen TV's will be displayed throughout the sale barn and a video of each bull will be displayed when each lot is being sold.

AUCTIONEER

Seth Weishaar 605-210-1124

RINGMEN

Donnie Leddy • Cattle Business Weekly
605-695-0113
Scott Dirk • Tri-State Livestock News
605-380-6024
Kirby Goetsch • Farm & Ranch Guide
605-380-3939

BUYER REPRESENTATIVES

Gary Fike • Kansas Rep 785-410-2608
Rusty Williamson • Williamson Land and Cattle,
Moorcroft, WY 307-756-2426

Buyers unable to attend sale may have their bid represented by contacting the auctioneer, one of the buyer representatives, the marketing manager or Gill Red Angus.

RED ANGUS ASSOCIATION

Rachael Oliver
Commercial Marketing Specialist
406-480-1569

SALE CATALOG

The Cattle Business Weekly, Philip, SD
605-859-2022 • cattle@gwtc.net
www.cattlebusinessweekly.com

SALE VETERINARIAN

Oahe Vet Clinic
Mobridge, South Dakota • 605-845-3634

SALE ORDER

Cattle will sell in catalog order, but are subject to change on sale day.

INSPECTION OF BULLS

The bulls are available to be viewed at ranch headquarters anytime between now and sale.

LOT TAGS

Ear tag numbers on the sale cattle will correspond to the sale catalog.

HEALTH, VACCINATIONS, & REQUIRED TRICH TESTING

At Gill Red Angus we maintain a consistent mineral and vaccination program. From birth to weaning, our calves receive their necessary vaccinations and remain on vitamins and minerals to aid in maintaining health as they grow. These bulls have also been poured prior to pasture and receive an oral dewormer when coming home as well as being poured again for lice.

NO LOAD OUT AFTER DARK ON SALE DAY

SALE TERMS & CONDITIONS

Any terms and conditions not covered by the catalog will refer to the Standard Terms & Conditions set forth by the Red Angus Association of America.

GILL RED ANGUS GUARANTEE

All bulls that are in good breeding condition at the beginning of the first breeding season are guaranteed breeders. This does not include any injury. Any bull that settles one third or more of the healthy cows he services or passes a fertility test made by a competent veterinarian during the first six months after the sale date is considered a good breeder. All claims for adjustment or refund must be made within six months of sale date. All bulls returned must be in good and healthy condition. Any bulls given a fertility test within the first six months after the sale date will be at the buyer's expense. All bulls are guaranteed to be breeders, however, no guarantee is given that the semen collected from a bull will freeze.

INSURANCE

An injury and mortality insurance is available on all bulls. Insurance is available through Ray Trudeau of Martin-Trudeau Insurance - 605-770-5170

This sale will be broadcast live online at

DVAuction
Broadcasting Real-Time Auctions
Real time bidding & proxy bidding available.

For more info about bidding online with
DVAuction.com, check out Pages 9 & 54



The Gill Red Angus Customer Marketing Program

"You Buy Our Bulls, We Will Bid on Your Calves"

Something that sets us apart from most of our competition is our Customer Service Program. Our slogan is "You buy our bulls and we will bid on your calves." This has really helped our customers on selling day. We have run replacement heifers up as much as \$15 per hundred weight! Add that up on a load of 525 lbs replacement heifers and that is an extra \$7500 in your pocket. Compare that to what is offered by other seed stock producers, how can you go wrong?

Here is how it works:

- ✓ First you must be a Gill Red Angus customer. At marketing time, contact Gill Red Angus with the marketing option you wish to pursue:
 - Complete Retained Ownership
 - Partial/Partnership Retained Ownership
 - Livestock Auction or Off-the-Farm Marketing - Sell 100% of your calves off-the-farm or at the stockyards and a Gill staff member will be there to place a bid on them for you.
 - Discounted semen available to all customers who want to AI.
 - Discounted vet supplies through DeTye Vet Supply, River Ag & Stockmans Supply.
- ✓ When possible, we will work with our customers to help form co-mingled loads of calves. Upon harvest, if possible, Gill Red Angus will prepare a report, complete with feed yard and harvest data, for your use.
- ✓ We are also available for consultations regarding breeding, replacement heifer procurement, and all marketing options. We will help you in any way we can to make your bottom dollar grow.

"You Buy Our Bulls, We Will Bid on Your Calves"



Hello Ranchers,

We would like to invite you to our annual Bull and Commercial Bred Heifer Sale on December 14th. We started with a little over 200 bulls, and have sorted them down to this great offering that we are extremely proud to offer. They are easy fleshing, long bodied, heavy muscled, sound and have the pedigrees to make great cows and high performing feeder cattle.

The heifers have been hand selected from some of our high maternal, top bull customers. They were culled going to and again coming off grass this fall. This set is a big bodied, easy fleshing group of heifers. They are the right kind!

The Red Angus Association of America has worked hard over the past year to open up new markets for the red hide at packing plants. The rules have changed at USDA and Red Angus can now be called Angus. Several packers are now purchasing Red Angus calves and including them in their "Angus" product lines. This is huge, as packing plants that have never purchased a red hide have contacted the association and are asking where they can find Red Angus fat cattle. This will only continue to grow, especially as the cattle inventory is tightening up across the country. The cattle market is considerably higher this fall than the past few years, and I am convinced this is the beginning of several years of outstanding prices. The cattle inventory across the country is very low, heifers aren't being retained, and the country is in a drought. The prices should only get stronger!

The bull and heifer videos will be on DVAuction in the near future. Give us or any of the representatives a call, and we would be glad to help you with any questions you may have.

See ya at the sale!

The Gills

Visit Our Website www.gillredangus.com

A video of each bull is available on the website



Brent and Bryan



Larry and Janet

GILL RED ANGUS DELIVERY

We will start delivering bulls directly after the sale. All of the heifers and cows will be shipped right after the sale. The trucking for the females will be at the buyer's expense.

We will continue to deliver bulls for free if you are from ND, SD, NE, and parts of MN, WY, and MT. (See map for details) We will deliver with both a semi and a stock trailer. If possible, we will deliver to your ranch, but it's not always possible, especially if we use our semi. So in those times, we ask that we meet you at "central points", like a sale barn.

For all other states, here are our delivery charges. We will charge \$150 per head for the first 450 miles, and for every hundred miles after that, it's an additional \$100 per head. Depending on the situation, we may ask you to meet us along the way. Also, if we have a trailer load of bulls going to the same area, the delivery charges will be adjusted less.



195 Commercial Bred Heifers



We are offering this outstanding set of commercial Red Angus bred heifers. We purchased them last fall and winter from what we consider some of our top maternal customers, who buy bulls out of the top end of our program. They were wintered on a high roughage ration and sent to grass after we AI'd them in May. They spent the summer in big pastures along the Missouri River north of Mobridge, S.D. When we sold the tested opens in September, they weighed 972 lbs. We will bring them back to the ranch around November 15 and turned them back on grass. We AI bred them to 9 Mile Franchise 6305 and Willow Franchise 1853. Both are proven calving ease bulls who also have some growth to them. The clean-up bulls were Gill Red Angus raised bulls who were mainly sons of Bieber Hard Drive Y120. They were ultrasounded in August to confirm AI or bull bred. Each breeding group is tagged separately and will be sold that way. They will also be lot tagged as they come down the chute via gate cut, per breeding group, starting with Lot 1.

We will sell them, choice of breeding group, taking as many as you want out of that group, with a minimum purchase of 5 head, starting with the first lot tag in that breeding group.

Calving Dates

| | | | |
|--|---|--|---|
| AI Breds 77 Head Feb. 19 to Feb. 28 | Bull Breds 1st Group 61 head March 1 to March 21 | Bull Breds 2nd Group 39 head March 22 to April 11 | Bull Breds 3rd group 17 head April 12 to May 5 |
|--|---|--|---|





1 **GILL RED ANGUS** **LMG GILLS MERLIN 949G 1278**
 5/31/21 4648727

WSM MERLIN 949G
4145216

WFL MERLIN 018A
WASEM ZINA 907W

LUCHT SARA 1103
1495795

LUCHT MARIO 907
LUCHT SARA 817- 999

| | ProS | HB | GM | CED | BW | WW | YW | Milk | Stay | MB | REA |
|-----------------|------|----|----|-----|------|----|----|------|------|-----|------|
| EPD | 64 | 49 | 15 | 11 | -2.1 | 58 | 94 | 29 | 15 | 0.3 | 0.02 |
| PCTL (%) | 90 | 63 | 90 | 70 | 45 | 60 | 55 | 15 | 55 | 75 | 70 |

Dam's MPPA: 103

BW: 84 lbs.

ADG: 5.5 lbs. 45 Day Test Sept. 7 - Oct. 19

WW: 779 lbs.

Projected Sale Day Weight: 1767 lbs.

This guy is a complete powerhouse! He is as deep and long as they come. He looks just like his sire, and is out of a great cow and cow family.

Pen 101



Maternal grand dam of Lot 1 - Lucht Sara 817



GILL RED ANGUS
You buy our bulls, we bid on your calves!



2 **LMG GILLS MERLIN 949G 1367**
 3/13/21 4571265

WSM MERLIN 949G
4145216

WFL MERLIN 018A
WASEM ZINA 907W

LMG MISS MTX 5626
3523501

LJC LANCER 313Y
LMG MISS MTX 3320

| | ProS | HB | GM | CED | BW | WW | YW | Milk | Stay | MB | REA |
|----------|------|----|----|-----|----|----|----|------|------|------|------|
| EPD | 78 | 50 | 28 | 11 | -2 | 61 | 98 | 32 | 16 | 0.34 | 0.19 |
| PCTL (%) | 73 | 65 | 70 | 70 | 45 | 45 | 45 | 4 | 50 | 65 | 35 |

Dam's MPPA: 106
BW: 85 lbs.
WW: 920 lbs.
ADG: 4.5 lbs. 45 Day Test Sept. 7 - Oct. 19
Projected Sale Day Weight: 1663 lbs.

Lot 2 is another powerhouse and is a half brother to Lot 1. He has a spot of white on his navel, but that won't stop his power!
Pen 101



Three long-time customers at the Red Angus calf sale at Mobridge Livestock



3  **LMG GILLS LAKOTA 9227 1210**
 4/17/21 4570993

BAR M LAKOTA 9227
4173410

RREDS SENECA 731C
BAR M MS HORIZON 5081

LMG MISS JESSE 8758
4097622

LMG MISS JESSE 6551

| | ProS | HB | GM | CED | BW | WW | YW | Milk | Stay | MB | REA |
|-----------------|------|----|----|-----|------|----|----|------|------|------|------|
| EPD | 91 | 53 | 38 | 12 | -1.2 | 61 | 93 | 24 | 14 | 0.31 | 0.28 |
| PCTL (%) | 55 | 55 | 85 | 55 | 65 | 45 | 60 | 60 | 65 | 75 | 20 |

Dam's MPPA: 98
BW: 78 lbs.
WW: 747 lbs.
ADG: 3.1 lbs. 45 Day Test Sept. 7 - Oct. 19
Projected Sale Day Weight: 1433 lbs.

Lot 3's sire is a new sire we bought from Barrenthson Red Angus. He has done a great job and is a fresh pedigree for our program. He is registered as a Cat. III through the Red Angus office as his dam has an unknown Red Angus sire. You can't get the Red Angus yellow tag from a Cat. III bull.

Pen 101



Hudson carrying the football



Holden and both sets of his grandparents

4 **LMG GILLS PROSPECT 469 1287** 4/22/21 4571127

4MC PROSPECT 469
1725003

LSF PROSPECT 2035Z
CCR CHEROKEE 340-510

LMG MISS ROXIE 2547
1563364

LMG GILLS PASQUOLE 9042W
LMG MISS ROXIE 9222

| | ProS | HB | GM | CED | BW | WW | YW | Milk | Stay | MB | REA |
|-----------------|------|----|----|-----|-----|----|-----|------|------|------|------|
| EPD | 113 | 87 | 26 | 8 | 1.1 | 70 | 111 | 19 | 22 | 0.34 | 0.05 |
| PCTL (%) | 20 | 5 | 75 | 95 | 95 | 15 | 20 | 95 | 1 | 70 | 65 |

Dam's MPPA: 98
BW: 82 lbs.
WW: 817 lbs.
ADG: 4.5 lbs. 45 Day Test Sept. 7 - Oct. 19
Projected Sale Day Weight: 1473 lbs.

Another complete powerhouse who is out of the deep bodied, easy going Prospect bull who goes back to the great Roxie cow line!
Pen 101

5 **LMG GILLS SPARTACUS 1239** 5/26/21 4571045

BIEBER SPARTACUS F129
3958047

BIEBER SPARTACUS A193
BIEBER ENCHANTRESS 399D

LMG MISS QUEEN 5681
3523379

C-T GRAND STATEMENT 1025
LMG MISS QUEEN 0147

| | ProS | HB | GM | CED | BW | WW | YW | Milk | Stay | MB | REA |
|-----------------|------|----|----|-----|------|----|-----|------|------|------|------|
| EPD | 89 | 54 | 35 | 12 | -1.9 | 72 | 119 | 27 | 15 | 0.38 | 0.09 |
| PCTL (%) | 60 | 55 | 55 | 55 | 50 | 15 | 10 | 30 | 50 | 55 | 55 |

Dam's MPPA: 97
BW: 80 lbs.
WW: 748 lbs.
ADG: 4 lbs. 45 Day Test Sept. 7 - Oct. 19
Projected Sale Day Weight: 1577 lbs.

This Spartacus son might be the best Spartacus bull we have raised to date.
Pen 101

6 **LMG GILLS RINGSIDE 1313 1356** 5/1/21 4571247

WILLOW RINGSIDE 1313-1753
3806584

HXC DECLARATION 5504C
WILLOW JACKIE 1313

LMG MISS LASS 5536
3523458

LSF HERDBUILDER 1058Y
LMG MISS GRAND LASS 2548

| | ProS | HB | GM | CED | BW | WW | YW | Milk | Stay | MB | REA |
|-----------------|------|----|----|-----|------|----|-----|------|------|------|------|
| EPD | 93 | 48 | 45 | 12 | -1.7 | 61 | 104 | 28 | 16 | 0.45 | 0.05 |
| PCTL (%) | 50 | 65 | 35 | 55 | 50 | 45 | 35 | 25 | 40 | 35 | 60 |

Dam's MPPA: 103
BW: 80 lbs.
WW: 953 lbs.
ADG: 2.9 lbs. 45 Day Test Sept. 7 - Oct. 19
Projected Sale Day Weight: 1520 lbs.

Ringside has sired the high selling bull for our last 2 fall sales with one going to Grassy Meadows Red Angus and Lazy J Bar Red Angus, and the other to longtime customers, Aberle Ranch.
Pen 101

7 **LMG GILLS MERLIN 949G 1349** 4/18/21 4571233

WSM MERLIN 949G
4145216

WFL MERLIN 018A
WASEM ZINA 907W

LMG MISS BOYD 8861
4097418

LMG GILLS OLY 4726
LMG MISS BOYD 5598

| | ProS | HB | GM | CED | BW | WW | YW | Milk | Stay | MB | REA |
|-----------------|------|----|----|-----|------|----|-----|------|------|------|------|
| EPD | 64 | 46 | 19 | 11 | -1.5 | 67 | 100 | 27 | 14 | 0.32 | 0.22 |
| PCTL (%) | 90 | 70 | 85 | 70 | 50 | 25 | 40 | 30 | 65 | 75 | 30 |

Dam's MPPA: 98
BW: 65 lbs.
WW: 749 lbs.
ADG: 3.8 lbs. 45 Day Test Sept. 7 - Oct. 19
Projected Sale Day Weight: 1423 lbs.

A good, low birth weight son of Merlin who weaned off great!
Pen 102

8 **LMG GILLS OPTIMISM 482 1343** 5/24/21 4571221

4MC OPTIMISM 482
1725031

LSF OPTIMISM 1107Y
PIE MS D C CRICKET 0284

LMG MISS ROXIE 6603
3571244

LSF HERDBUILDER 1058Y
LMG MISS ROXIE 6093

| | ProS | HB | GM | CED | BW | WW | YW | Milk | Stay | MB | REA |
|-----------------|------|-----|----|-----|------|----|-----|------|------|------|------|
| EPD | 151 | 106 | 45 | 13 | -1.5 | 63 | 100 | 29 | 21 | 0.42 | 0.16 |
| PCTL (%) | 1 | 1 | 35 | 40 | 50 | 40 | 40 | 15 | 1 | 45 | 40 |

Dam's MPPA: 106
BW: 80 lbs.
WW: 987 lbs.
ADG: 4.8 lbs. 45 Day Test Sept. 7 - Oct. 19
Projected Sale Day Weight: 1637 lbs.

We used Optimism on cows and heifers.
Pen 102



9 **LMG GILLS TRENDING 618 1241**
 5/26/21 **4571049**

STRA TRENDING 618
3556536

BIEBER ROLLIN DEEP Y118
HRR COLLEEN 429

LMG MISS 7216
3899331

PIE LEGEND 468
LUCHT VRDALE 35

| | ProS | HB | GM | CED | BW | WW | YW | Milk | Stay | MB | REA |
|-----------------|------|----|----|-----|------|----|----|------|------|------|------|
| EPD | 92 | 75 | 18 | 10 | -0.1 | 60 | 99 | 20 | 18 | 0.36 | 0.17 |
| PCTL (%) | 55 | 15 | 90 | 80 | 80 | 35 | 40 | 90 | 20 | 60 | 40 |

Dam's MPPA: 105

BW: 75 lbs.

ADG: 4.3 lbs. 45 Day Test Sept. 7 - Oct. 19

WW: 866 lbs.

Projected Sale Day Weight: 1440 lbs.

A powerful, May born, good looking bull.

Pen 102

10 **LMG GILLS DIESEL 8413 1256**
 4/21/21 **4571077**

LMG GILLS DIESEL 8413
4097858

LMG GILLS VIN DIESEL 4533
LMG MISS MTX 3272

LMG MISS MTX 9542
4283045

LSF SRR FOREMOST 5314C
LMG MISS MTX 6450

| | ProS | HB | GM | CED | BW | WW | YW | Milk | Stay | MB | REA |
|-----------------|------|----|----|-----|-----|----|-----|------|------|------|------|
| EPD | 97 | 55 | 42 | 8 | 0.5 | 65 | 108 | 25 | 18 | 0.44 | 0.11 |
| PCTL (%) | 45 | 55 | 40 | 95 | 90 | 35 | 25 | 50 | 20 | 40 | 55 |

Dam's MPPA: 99

BW: 76 lbs.

ADG: 3.8 lbs. 45 Day Test Sept. 7 - Oct. 19

WW: 764 lbs.

Projected Sale Day Weight: 1393 lbs.

Lot 10's grandsire will be 9 years old this next spring and will be used again next year and his great grandsire lived to 11 years old. His dam is part of the good MTX cow line. Awesome things will come from this mating!

Pen 102

View the Auction Live! Bid Online... you're ringside right at your desk!

Buying online is as easy as 1, 2, 3...

1. Create an account at www.DVAuction.com under the "Register" tab
2. Apply for bidding approval by clicking on the "details" tab at least 24 hours prior to the auction — a DV representative will notify you once you have been approved.
3. Tune in for the sale to make your purchases!

High Speed internet is required for successful bidding—be sure to check the lag-time monitor in the top left corner to ensure real-time broadcasts.

Proxy-bidding — if you can't make time to watch the sale, register a proxy bid and let our system represent your bid while you're away. Look for the "proxy bid" tab on the auction listing, and fill in your maximum bids. We'll handle the rest!

For General Questions Please contact Our Office:

402-316-5460 or support@dvauction.com



DVAuction
Broadcasting Real-Time Auctions

GILL RED ANGUS

11 LMG GILLS RINGSIDE 1313 1354

5/26/21 4571243

WILLOW RINGSIDE 1313-1753
3806584

HXC DECLARATION 5504C
WILLOW JACKIE 1313

LMG MISS DYNETTE
1667991

FEDDES COMANDER Y104
LMG MISS DYNETTE 0003

| | ProS | HB | GM | CED | BW | WW | YW | Milk | Stay | MB | REA |
|----------|------|----|----|-----|------|----|-----|------|------|------|------|
| EPD | 86 | 44 | 43 | 11 | -1.8 | 63 | 110 | 26 | 16 | 0.32 | 0.05 |
| PCTL (%) | 65 | 75 | 40 | 70 | 50 | 40 | 25 | 40 | 45 | 75 | 65 |

Dam's MPPA: 100
BW: 80 lbs.
WW: 846 lbs.
ADG: 4.5 lbs. 45 Day Test Sept. 7 - Oct. 19
Projected Sale Day Weight: 1523 lbs.

Lot 11 is another good Ringside son who goes back to the great Dynette line. This is one of the best cow lines we have ever had.

Pen 102

13 LMG GILLS TRENDING 618 1325

4/30/21 4571191

STRA TRENDING 618
3556536

BIEBER ROLLIN DEEP Y118
HRR COLLEEN 429

LMG MISS 7202
3899357

LSF SRR FOREMOST 5314C
LMG MISS SARA 5542

| | ProS | HB | GM | CED | BW | WW | YW | Milk | Stay | MB | REA |
|----------|------|----|----|-----|-----|----|-----|------|------|------|------|
| EPD | 109 | 63 | 45 | 8 | 0.6 | 68 | 109 | 21 | 18 | 0.51 | 0.26 |
| PCTL (%) | 26 | 36 | 32 | 97 | 90 | 23 | 25 | 84 | 22 | 28 | 23 |

Dam's MPPA: 102
BW: 90 lbs.
WW: 858 lbs.
ADG: 3.1 lbs. 45 Day Test Sept. 7 - Oct. 19
Projected Sale Day Weight: 1453 lbs.

I have always liked these Trending sons. This guy goes back to the great Sara cow line.

Pen 102

14 LMG GILLS MEAT WAGON 6

5/15/21 Commercial

LMG GILLS REDEMPTION 8320
4098040

CER MR. REDEMPTION 41D
LMG MISS CINNAMON 4201

100% RED ANGUS COW

100% RED ANGUS BULL
100% RED ANGUS COW

| | ProS | HB | GM | CED | BW | WW | YW | Milk | Stay | MB | REA |
|----------|------|----|----|-----|----|----|----|------|------|----|-----|
| EPD | | | | | | | | | | | |
| PCTL (%) | | | | | | | | | | | |

BW: 84 lbs. ADG: 7.4 lbs. 45 Day Test Sept. 7 - Oct. 19
WW: 855 lbs. Projected Sale Day Weight: 1673 lbs.

When we weaned this guy, he came in without an ear tag. We never did figure out who he belonged to, so we have to sell him as a non papered bull without EPD's.

Pen 102



15 LMG GILLS DIESEL 8413 1314

5/10/21 4571171

LMG GILLS DIESEL 8413
4097858

LMG GILLS VIN DIESEL 4533
LMG MISS MTX 3272

LMG MISS FREYJA 9129
1356541

PIE MAXIMIZER 5052
LMG FREYJA 3024

| | ProS | HB | GM | CED | BW | WW | YW | Milk | Stay | MB | REA |
|----------|------|----|----|-----|------|----|----|------|------|------|------|
| EPD | 63 | 45 | 17 | 11 | -1.9 | 56 | 86 | 25 | 15 | 0.28 | 0.09 |
| PCTL (%) | 90 | 70 | 90 | 70 | 50 | 65 | 70 | 50 | 45 | 80 | 55 |

Dam's MPPA: 107
BW: 78 lbs.
WW: 777 lbs.
ADG: 6.4 lbs. 45 Day Test Sept. 7 - Oct. 19
Projected Sale Day Weight: 1650 lbs.

Take a look at this big gaining Diesel son!!!
Pen 102



Lot 16 and his dam the day he was born



Lot 16

16 **LMG GILLS CARMICHAEL 6614**
4/28/21 4571105

CARMICHAEL MR. HEREFORD CARMICHAEL MR. HEREFORD
MISS CARMICHAEL

LMG MISS BLOCKANA 6614 1DRA VICTORY 0034
3556403 LUCHT BLOCKANA 115

| | ProS | HB | GM | CED | BW | WW | YW | Milk | Stay | MB | REA |
|----------|------|----|----|-----|------|----|----|------|------|-----|------|
| EPD | 77 | 23 | 54 | 12 | -1.3 | 43 | 63 | 18 | 7 | 0.4 | 0.08 |
| PCTL (%) | 76 | 96 | 18 | 53 | 61 | 94 | 95 | 97 | 99 | 52 | 60 |

Dam's MPPA: 99

BW: 84 lbs. ADG: 7.3 lbs. 45 Day Test Sept. 7 - Oct. 19
WW: 735 lbs. Projected Sale Day Weight: 1687 lbs.

This is a 1/2 blood composite Red Angus X Hereford. He is an outstanding, long bodied, thick made bull who will grab your attention. Take a look at how many pounds he gained per day in his test!!!

Pen 102

18 **LMG GILLS HARD DRIVE 1294**
5/26/21 4571137

LMG GILLS HARD DRIVE 7003 BIEBER HARD DRIVE Y120
3802960 MLF SARA 30Z

LMG MISS LAKINA 4061 FLYING W GAME PLAN 189Y
1743444 LUCHT LAKINA 985

| | ProS | HB | GM | CED | BW | WW | YW | Milk | Stay | MB | REA |
|----------|------|----|----|-----|------|----|-----|------|------|-----|------|
| EPD | 90 | 49 | 41 | 12 | -1.1 | 65 | 105 | 27 | 16 | 0.4 | 0.22 |
| PCTL (%) | 55 | 65 | 45 | 55 | 65 | 35 | 35 | 65 | 45 | 50 | 25 |

Dam's MPPA: 104

BW: 84 lbs. ADG: 3.1 lbs. 45 Day Test Sept. 7 - Oct. 19
WW: 785 lbs. Projected Sale Day Weight: 1293 lbs.

Lot 18 is a great looking Hard Drive son who has great numbers and weights! The Lakina cow line is one of the oldest and better lines in the breed.

Pen 103

17 **LMG GILLS MERLIN 949G 1223**
4/28/21 4571017

WSM MERLIN 949G WFL MERLIN 018A
4145216 WASEM ZINA 907W

LMG MISS DYNETTE 6522 LMG GILLS VIN DIESEL 7611
3711935 LMG MISS DYNETTE 0405

| | ProS | HB | GM | CED | BW | WW | YW | Milk | Stay | MB | REA |
|----------|------|----|----|-----|------|----|-----|------|------|------|------|
| EPD | 46 | 35 | 11 | 9 | -0.2 | 69 | 109 | 26 | 14 | 0.19 | 0.34 |
| PCTL (%) | 95 | 85 | 90 | 90 | 80 | 20 | 25 | 45 | 60 | 90 | 15 |

Dam's MPPA: 99

BW: 92 lbs. ADG: 3.3 lbs. 45 Day Test Sept. 7 - Oct. 19
WW: 675 lbs. Projected Sale Day Weight: 1327 lbs.

We are offering several of these good Merlin sons. Use them to add depth of body, muscle, and easy fleshing.

Pen 103



Lot 18

19  **LMG GILLS PROSPECT 1259**
4/8/21 **4571081**

LMG GILLS PROSPECT 8428 4MC PROSPECT 469
4097830 LMG MISS LYDIA 0116

LMG MISS DYNETTE 77010 RBJR ADVANCE A709
1176780 LMG DYNETTE 902

| | ProS | HB | GM | CED | BW | WW | YW | Milk | Stay | MB | REA |
|----------|------|----|----|-----|------|----|----|------|------|------|------|
| EPD | 72 | 54 | 18 | 11 | -0.1 | 64 | 99 | 21 | 15 | 0.24 | 0.08 |
| PCTL (%) | 85 | 50 | 90 | 70 | 80 | 35 | 45 | 85 | 45 | 85 | 60 |

20  **LMG GILLS STATEMENT 1309**
4/17/21 **4571163**

LMG GILLS STATEMENT 8468 LMG GILLS STATEMENT 4591
4097756 LMG MISS SARA 9010

LMG MISS ROXIE 9704 STRA TRENDING 618
4283361 LMG MISS ROXIE 3296

| | ProS | HB | GM | CED | BW | WW | YW | Milk | Stay | MB | REA |
|----------|------|----|----|-----|------|----|----|------|------|------|------|
| EPD | 48 | 22 | 26 | 11 | -0.7 | 44 | 67 | 15 | 12 | 0.33 | 0.23 |
| PCTL (%) | 98 | 96 | 73 | 75 | 72 | 93 | 93 | 99 | 86 | 70 | 28 |

Dam's MPPA: 95

BW: 78 lbs.

ADG: 4 lbs. 45 Day Test Sept. 7 - Oct. 19

WW: 681 lbs.

Projected Sale Day Weight: 1387 lbs.

This is a very well made Statement son with a lighter birth weight. His dam is from the great Roxie cow family and is a daughter of Trending!

Pen 103

21  **LMG GILLS HARD DRIVE 1208**
5/25/21 **4570989**

LMG GILLS HARD DRIVE 7003 BIEBER HARD DRIVE Y120
3802960 MLF SARA 30Z

LMG MISS 7238 LMG GILLS STATEMENT 2066
3899289 LMG MISS QUEEN 4013

| | ProS | HB | GM | CED | BW | WW | YW | Milk | Stay | MB | REA |
|----------|------|----|----|-----|------|----|-----|------|------|------|------|
| EPD | 82 | 35 | 48 | 11 | -1.5 | 67 | 110 | 28 | 14 | 0.43 | 0.28 |
| PCTL (%) | 65 | 85 | 25 | 70 | 55 | 25 | 25 | 25 | 65 | 45 | 20 |

Dam's MPPA: 101

BW: 87 lbs.

WW: 672 lbs.

ADG: 4 lbs. 45 Day Test Sept. 7 - Oct. 19

Projected Sale Day Weight: 1447 lbs.

Over the last several years we have been offering you guys these good Prospect sons. He is proving to be highly maternal and powerful, with great dispositions.

Pen 103



Lot 20

Dam's MPPA: 97

BW: 82 lbs.

WW: 1063 lbs.

ADG: 3.3 lbs. 45 Day Test Sept. 7 - Oct. 19

Projected Sale Day Weight: 1347 lbs.

You will appreciate the eye appeal Lot 21 has as he is long, thick, and deep. He has a powerful set of numbers to go with it.

Pen 103



Cayne in Jail



Kendyl hiking.



Brent and Emily's kids at Reptile Gardens



22 **GILL RED ANGUS** **LMG GILLS TRENDING 618 1271**
 5/3/21 **4571103**

STRA TRENDING 618
 3556536

BIEBER ROLLIN DEEP Y118
 HRR COLLEEN 429

LMG MISS LASS 4120
 1743501

LJC LANCER 313Y
 LMG MISS LASS 2507

| | ProS | HB | GM | CED | BW | WW | YW | Milk | Stay | MB | REA |
|-----------------|------|----|----|-----|----|----|----|------|------|------|------|
| EPD | 94 | 56 | 38 | 10 | -1 | 57 | 98 | 20 | 17 | 0.43 | 0.25 |
| PCTL (%) | 45 | 50 | 50 | 80 | 65 | 60 | 45 | 90 | 25 | 45 | 30 |

Dam's MPPA: 97

BW: 86 lbs.

ADG: 4 lbs. 45 Day Test Sept. 7 - Oct. 19

WW: 841 lbs.

Projected Sale Day Weight: 1527 lbs.

Perfect weights on a great looking bull.

Pen 103



Grandam to Lot 22



*See You at the Ranch on
 December 14!*

GILL RED ANGUS

23 LMG GILLS HARD DRIVE 1331 6/1/21 4571199

LMG GILLS HARD DRIVE 7003
3802960

BIEBER HARD DRIVE Y120
MLF SARA 30Z

LMG MISS LASS 5532
3523418

LMG GILLS INDEED 1603
LMG MISS LASS 1360

| | ProS | HB | GM | CED | BW | WW | YW | Milk | Stay | MB | REA |
|----------|------|----|----|-----|----|----|-----|------|------|------|------|
| EPD | 95 | 57 | 38 | 11 | -1 | 71 | 112 | 26 | 17 | 0.39 | 0.28 |
| PCTL (%) | 45 | 50 | 50 | 70 | 65 | 15 | 20 | 40 | 30 | 50 | 25 |

Dam's MPPA: 96
BW: 71 lbs.
WW: 966 lbs.
ADG: 2.9 lbs. 45 Day Test Sept. 7 - Oct. 19
Projected Sale Day Weight: 1270 lbs.

Look at this low birth weight Hard Drive son! He has a great look, weaned off heavy, and is out of a super Lass cow.

Pen 103

24 LMG GILLS REDEMPTION 1222 5/12/21 4571015

LMG GILLS REDEMPTION 8320
4098040

CER MR. REDEMPTION 41D
LMG MISS CINNAMON 4201

LMG MISS FREEDOM 0030
1414903

LMG GILLS VIN DIESEL 7611
JRA FREEDOM 39

| | ProS | HB | GM | CED | BW | WW | YW | Milk | Stay | MB | REA |
|----------|------|----|----|-----|-----|----|-----|------|------|------|------|
| EPD | 76 | 51 | 26 | 9 | 0.6 | 65 | 106 | 21 | 16 | 0.28 | 0.03 |
| PCTL (%) | 80 | 60 | 75 | 90 | 90 | 35 | 30 | 85 | 45 | 80 | 70 |

Dam's MPPA: 104
BW: 80 lbs.
WW: 909 lbs.
ADG: 3.6 lbs. 45 Day Test Sept. 7 - Oct. 19
Projected Sale Day Weight: 1250 lbs.

Near perfect weights on this guy!

Pen 103

25 LMG GILLS LAKOTA 9227 1226 4/6/21 4571023

BAR M LAKOTA 9227
4173410

RREDS SENECA 731C
BAR M MS HORIZON 5081

LMG MISS EMILY 3295
1668010

LUCHT MARIO 907
LUCHT MISS EMILY 50

| | ProS | HB | GM | CED | BW | WW | YW | Milk | Stay | MB | REA |
|----------|------|----|----|-----|------|----|-----|------|------|------|------|
| EPD | 89 | 68 | 21 | 12 | -1.2 | 65 | 106 | 21 | 18 | 0.23 | 0.05 |
| PCTL (%) | 55 | 25 | 85 | 55 | 65 | 35 | 30 | 85 | 20 | 90 | 65 |

Dam's MPPA: 99
BW: 72 lbs.
WW: 622 lbs.
ADG: 3.6 lbs. 45 Day Test Sept. 7 - Oct. 19
Projected Sale Day Weight: 1360 lbs.

This is a good lower birth weight son of Lakota.

Pen 103

26 LMG GILLS COOPERSTOWN 1312 4/30/21 4571167

RLC COOPERSTOWN 131F
3976636

FLYING W HEADLINE 213B
RLC SKYLAR 206D

LMG MISS LYDIA 3316
1667932

LMG GILLS WIDE SPREAD 0904
LMG MISS LYDIA 8042

| | ProS | HB | GM | CED | BW | WW | YW | Milk | Stay | MB | REA |
|----------|------|----|----|-----|----|----|----|------|------|------|------|
| EPD | 68 | 61 | 7 | 10 | 1 | 59 | 91 | 24 | 18 | 0.15 | 0.14 |
| PCTL (%) | 85 | 40 | 95 | 80 | 90 | 55 | 65 | 65 | 20 | 95 | 50 |

Dam's MPPA: 99

BW: 86 lbs.

ADG: 3.3 lbs. 45 Day Test Sept. 7 - Oct. 19

WW: 794 lbs.

Projected Sale Day Weight: 1327 lbs.

Lot 26 is a big and powerful bull with great length and eye appeal. He will grab your eye sale day!

Pen 103



Cutting Sudan grass.

27  **LMG GILLS MERLIN 949G 1355**
4/29/21 4571245

WSM MERLIN 949G
4145216

WFL MERLIN 018A
WASEM ZINA 907W

LMG MISS FORTUNA 8875
4097392

UNKNOWN
TCJL 0139

| | ProS | HB | GM | CED | BW | WW | YW | Milk | Stay | MB | REA |
|----------|------|----|----|-----|------|----|----|------|------|------|-----|
| EPD | 65 | 37 | 27 | 11 | -0.9 | 57 | 84 | 25 | 12 | 0.34 | 0.2 |
| PCTL (%) | 90 | 80 | 70 | 70 | 70 | 65 | 75 | 50 | 85 | 65 | 40 |

Dam's MPPA: 100
BW: 84 lbs.
WW: 753 lbs.
ADG: 2.9 lbs. 45 Day Test Sept. 7 - Oct. 19
Projected Sale Day Weight: 1230 lbs.

Lot 27 is registered as Category III. He is 100% Red Angus, but has an unknwn sire in the pedigree. His EPD's reflect the missing sire and aren't as impressive because of it. Category III sires do not qualify for the Red Angus Yellow tag.

Pen 103

28  **LMG GILLS DIESEL 1244**
4/17/21 4571053

LMG GILLS DIESEL 8413
4097858

LMG GILLS VIN DIESEL 4533
LMG MISS MTX 3272

LMG MISS QUEEN 9724
4283401

PIE LEGEND 468
LMG MISS 7238

| | ProS | HB | GM | CED | BW | WW | YW | Milk | Stay | MB | REA |
|----------|------|----|----|-----|----|----|-----|------|------|------|------|
| EPD | 72 | 52 | 20 | 10 | -1 | 60 | 100 | 25 | 16 | 0.31 | 0.09 |
| PCTL (%) | 80 | 55 | 80 | 85 | 65 | 50 | 45 | 50 | 40 | 75 | 60 |

Dam's MPPA: 96
BW: 76 lbs.
WW: 697 lbs.
ADG: 3.8 lbs. 45 Day Test Sept. 7 - Oct. 19
Projected Sale Day Weight: 1323 lbs.

A stretchy Diesel son with a lot of eye appeal.

Pen 103

29  **LMG GILLS MERLIN 949G 1246**
5/11/21 4571057

WSM MERLIN 949G
4145216

WFL MERLIN 018A
WASEM ZINA 907W

LMG MISS MTX 5525
3523408

1DRA VICTORY 0034
LMG MISS MTX 1278

| | ProS | HB | GM | CED | BW | WW | YW | Milk | Stay | MB | REA |
|----------|------|----|----|-----|-----|----|-----|------|------|------|-----|
| EPD | 48 | 29 | 20 | 9 | 0.8 | 72 | 113 | 27 | 13 | 0.31 | 0.2 |
| PCTL (%) | 95 | 90 | 85 | 90 | 90 | 15 | 20 | 30 | 70 | 75 | 40 |

Dam's MPPA: 100
BW: 86 lbs.
WW: 865 lbs.
ADG: 5.2 lbs. 45 Day Test Sept. 7 - Oct. 19
Projected Sale Day Weight: 1463 lbs.

You gotta love the eye appeal and performance on this guy. He gained over 5 lbs a day on the 45 day test this fall!

Pen 103



30  **LMG GILLS DIESEL 8413 1227**
4/28/21 4648725

LMG GILLS DIESEL 8413
4097858

LMG GILLS VIN DIESEL 4533
LMG MISS MTX 3272

LMG MISS QUEEN 9722
4283397

C-T GRAND STATEMENT 1025
LMG MISS QUEEN 5681

| | ProS | HB | GM | CED | BW | WW | YW | Milk | Stay | MB | REA |
|----------|------|----|----|-----|------|----|----|------|------|------|------|
| EPD | 83 | 55 | 28 | 9 | -0.6 | 60 | 98 | 25 | 16 | 0.39 | 0.05 |
| PCTL (%) | 70 | 50 | 70 | 90 | 70 | 50 | 45 | 50 | 50 | 55 | 65 |

BW: 78 lbs. ADG: 2.9 lbs. 45 Day Test Sept. 7 - Oct. 19
WW: 794 lbs. **Projected Sale Day Weight: 1390 lbs.**

Under 80 lbs at birth and bumping on 800 lbs at weaning. What more could you want?

Pen 104

31 **LMG GILLS SPARTACUS 1251** 4/16/21 4571067

BIEBER SPARTACUS F129
3958047

BIEBER SPARTACUS A193
BIEBER ENCHANTRESS 399D

LMG MISS MTX 3228
1667987

C-T GRAND STATEMENT 1025
LMG MISS MTX 0068

| | ProS | HB | GM | CED | BW | WW | YW | Milk | Stay | MB | REA |
|-----------------|------|----|----|-----|------|----|-----|------|------|------|------|
| EPD | 77 | 45 | 32 | 13 | -2.3 | 72 | 119 | 27 | 12 | 0.36 | 0.13 |
| PCTL (%) | 75 | 70 | 60 | 40 | 40 | 15 | 10 | 30 | 85 | 65 | 45 |

Dam's MPPA: 99
BW: 60 lbs.
WW: 808 lbs.
ADG: 3.1 lbs. 45 Day Test Sept. 7 - Oct. 19
Projected Sale Day Weight: 1313 lbs.

WOW! 60 lbs birth weight and 808 lbs at weaning!!!
Pen 104

32 **LMG GILLS MERLIN 949G 1305** 3/13/21 4571155

WSM MERLIN 949G
4145216

WFL MERLIN 018A
WASEM ZINA 907W

LMG MISS 7220
3899323

LSF SRR FOREMOST 5314C
LUCHT BLOCKANA 980

| | ProS | HB | GM | CED | BW | WW | YW | Milk | Stay | MB | REA |
|-----------------|------|----|----|-----|----|----|----|------|------|-----|------|
| EPD | 76 | 42 | 34 | 10 | -1 | 57 | 93 | 24 | 15 | 0.4 | 0.17 |
| PCTL (%) | 75 | 75 | 60 | 80 | 65 | 65 | 60 | 60 | 55 | 50 | 40 |

Dam's MPPA: 93

BW: 78 lbs. **ADG:** 3.6 lbs. 45 Day Test Sept. 7 - Oct. 19
WW: 633 lbs. **Projected Sale Day Weight:** 1360 lbs.

Another dark colored, deep bodied Merlin son. Come get a load of them!
Pen 104



33 **LMG GILLS REDEMPTION 1365** 6/18/21 4571261

LMG GILLS REDEMPTION 8320
4098040

CER MR. REDEMPTION 41D
LMG MISS CINNAMON 4201

LMG MISS ECHETA 6576
3556367

4MC PROSPECT 469
LMG MISS ECHETA 2552

| | ProS | HB | GM | CED | BW | WW | YW | Milk | Stay | MB | REA |
|-----------------|------|----|----|-----|-----|----|-----|------|------|------|-------|
| EPD | 110 | 73 | 37 | 8 | 0.2 | 63 | 105 | 16 | 20 | 0.38 | -0.01 |
| PCTL (%) | 25 | 20 | 50 | 95 | 85 | 45 | 35 | 95 | 3 | 60 | 80 |

Dam's MPPA: 96

BW: 85 lbs. **ADG:** 4.3 lbs. 45 Day Test Sept. 7 - Oct. 19
WW: 819 lbs. **Projected Sale Day Weight:** 1430 lbs.

A well made Redemption son with great weights and numbers!
Pen 104



Wesley putting CDRs in.

34



LMG GILLS FRANCHISE 1638 1281

4/19/21

4571119

WILLOW FRANCHISE 1638-1853
4020990

9 MILE FRANCHISE 6305
WILLOW FIREFLY 1638

LMG MISS MARGO 9632
4283221

PIE LEGEND 468
LMG MISS MARGO 7307

| | ProS | HB | GM | CED | BW | WW | YW | Milk | Stay | MB | REA |
|----------|------|----|----|-----|----|----|-----|------|------|------|------|
| EPD | 76 | 57 | 18 | 11 | 0 | 69 | 115 | 30 | 15 | 0.28 | 0.19 |
| PCTL (%) | 75 | 50 | 85 | 70 | 85 | 20 | 15 | 10 | 50 | 80 | 40 |

BW: 92 lbs.

ADG: 5 lbs. 45 Day Test Sept. 7 - Oct. 19

WW: 737 lbs.

Projected Sale Day Weight: 1470 lbs.

You will like these Franchise sons, lots of eye appeal and performance in them.

Pen 104



GILL RED ANGUS

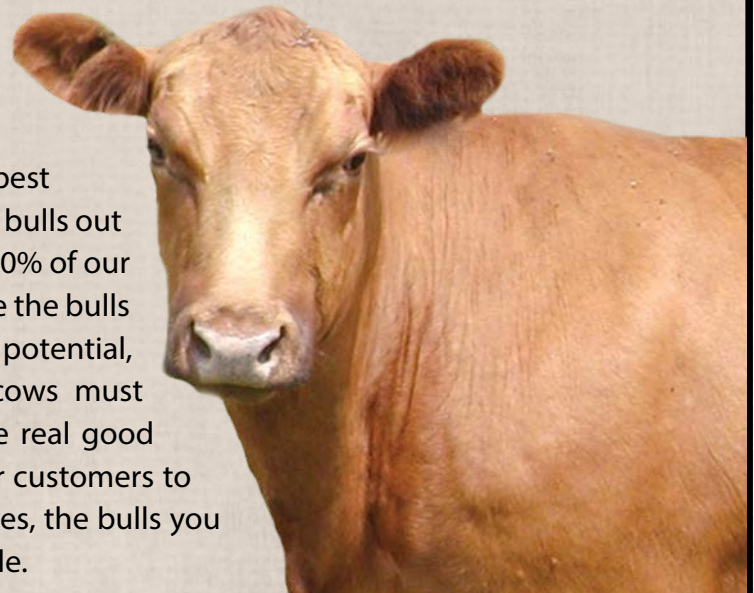
You buy our bulls, we bid on your calves!

Our Commitment

We know in order for us to be successful, our customers need to be successful as well. That's why we have committed ourselves to add value to your calf crop with feeder calf and heifer marketing. Ask about how we can help promote your Gill Red Angus sired calves to potential customers.

Our Dedication

We are dedicated to raising the highest quality bulls possible for both our customers and the feeders who purchase our customer's calves every year. In order for us to supply you with the best bulls possible, we will only use the absolute best bulls out of the very best cows. We also take the bottom 20% of our cowherd and sell them every December. We raise the bulls with the goal of developing them to their max potential, while keeping them sound and fertile. Our cows must be easy fleshing, sound made, fertile, and have real good udders on them. No exceptions! In order for our customers to continue getting a premium for their heifer calves, the bulls you use need to come from the best genetics possible.



35  **LMG GILLS REDEMPTION 1203**
4/28/21 **4570981**

LMG GILLS REDEMPTION 8320 CER MR. REDEMPTION 41D
4098040 LMG MISS CINNAMON 4201

LMG MISS ROXIE 8784 PIE LEGEND 468
4097574 LMG MISS ROXIE 3222

| | ProS | HB | GM | CED | BW | WW | YW | Milk | Stay | MB | REA |
|----------|------|----|----|-----|------|----|-----|------|------|------|------|
| EPD | 90 | 58 | 32 | 10 | -0.8 | 62 | 106 | 23 | 16 | 0.34 | 0.03 |
| PCTL (%) | 55 | 45 | 60 | 80 | 70 | 45 | 30 | 70 | 40 | 70 | 70 |

Dam's MPPA: 99
BW: 85 lbs.
WW: 765 lbs.
ADG: 5 lbs. 45 Day Test Sept. 7 - Oct. 19
Projected Sale Day Weight: 1500 lbs.

One of the last Redemption calves that we will have as he got injured a couple summers ago.
Pen 104

36  **LMG GILLS DIESEL 8413 1214**
4/19/21 **4570999**

LMG GILLS DIESEL 8413 LMG GILLS VIN DIESEL 4533
4097858 LMG MISS MTX 3272

LMG MISS FREYJA 9551 HBR LINEDRIVE 663
4283063 LMG MISS FREYJA 6635

| | ProS | HB | GM | CED | BW | WW | YW | Milk | Stay | MB | REA |
|----------|------|----|----|-----|----|----|-----|------|------|------|------|
| EPD | 75 | 50 | 25 | 10 | 0 | 69 | 107 | 23 | 15 | 0.33 | 0.16 |
| PCTL (%) | 80 | 60 | 75 | 80 | 85 | 20 | 30 | 70 | 50 | 70 | 45 |

Dam's MPPA: 99
BW: 77 lbs.
WW: 760 lbs.
ADG: 3.8 lbs. 45 Day Test Sept. 7 - Oct. 19
Projected Sale Day Weight: 1413 lbs.

I have always had a soft spot for the Diesel's. They aren't your traditional Red Angus. They add lots of length, muscle and bone, which translates to power and feedlot performance.
Pen 104

37  **LMG GILLS STOCKMARKET 5653**
4/17/21 **4571633**

BIEBER CL STOCKMARKET E119 PIE STOCKMAN 4051
3751659 BIEBER CL ADELLE 475C

LMG MISS ARROW 5653 LMG GILLS VIN DIESEL 7611
3523258 SST KP ARROW M417

| | ProS | HB | GM | CED | BW | WW | YW | Milk | Stay | MB | REA |
|----------|------|----|----|-----|------|----|-----|------|------|------|------|
| EPD | 115 | 69 | 47 | 15 | -3.9 | 64 | 105 | 26 | 19 | 0.73 | 0.21 |
| PCTL (%) | 20 | 25 | 30 | 15 | 15 | 35 | 35 | 45 | 20 | 10 | 40 |

Dam's MPPA: 102
BW: 86 lbs.
WW: 817 lbs.
ADG: 2.4 lbs. 45 Day Test Sept. 7 - Oct. 19
Projected Sale Day Weight: 1263 lbs.

A good looking Stockmarket calf that has the numbers to go with him.
Pen 104

38  **LMG GILLS OPTIMISM 482 1315**
5/4/21 **4571173**

4MC OPTIMISM 482 LSF OPTIMISM 1107Y
1725031 PIE MS D C CRICKET 0284

168 LMG C CHIEF 518
366675 LMG MISS BRANDY 869

| | ProS | HB | GM | CED | BW | WW | YW | Milk | Stay | MB | REA |
|----------|------|----|----|-----|------|----|----|------|------|------|-------|
| EPD | 127 | 1 | 24 | 12 | -1.7 | 43 | 64 | 20 | 23 | 0.26 | -0.04 |
| PCTL (%) | 10 | 95 | 75 | 55 | 50 | 90 | 90 | 90 | 1 | 80 | 85 |

Dam's MPPA: 100
BW: 84 lbs. ADG: 4.3 lbs. 45 Day Test Sept. 7 - Oct. 19
WW: 766 lbs. Projected Sale Day Weight: 1430 lbs.

We no longer have Optimism as he hurt a hip a couple years ago. He did a great job adding length and calving ease into our program.
Pen 104



Gracen and Kristen dancing



39  **LMG GILLS MERLIN 949G 1209**
3/29/21 **4570991**

WSM MERLIN 949G
4145216

WFL MERLIN 018A
WASEM ZINA 907W

LMG MISS RITA 8742
4097654

LSF SRR FOREMOST 5314C
LMG MISS RITA 0416

| | ProS | HB | GM | CED | BW | WW | YW | Milk | Stay | MB | REA |
|----------|------|----|----|-----|------|----|----|------|------|------|------|
| EPD | 69 | 39 | 30 | 9 | -0.8 | 61 | 95 | 29 | 14 | 0.36 | 0.18 |
| PCTL (%) | 85 | 80 | 70 | 90 | 70 | 50 | 55 | 15 | 60 | 65 | 45 |

Dam's MPPA: 106
 BW: 87 lbs.
 WW: 883 lbs.
 ADG: 4.3 lbs. 45 Day Test Sept. 7 - Oct. 19
Projected Sale Day Weight: 1470 lbs.

Lot 39 will grab your eye sale day. He has extra length and eye appeal.
Pen 104

40  **LMG GILLS FRANCHISE 1638 9628**
3/17/21 **4571779**

WILLOW FRANCHISE 1638-1853
4020990

9 MILE FRANCHISE 6305
WILLOW FIREFLY 1638

LMG MISS LASS 9628
4283213

STRA TRENDING 618
LMG MISS LASS 5532

| | ProS | HB | GM | CED | BW | WW | YW | Milk | Stay | MB | REA |
|----------|------|----|----|-----|------|----|-----|------|------|------|------|
| EPD | 73 | 55 | 19 | 10 | -0.4 | 62 | 103 | 24 | 16 | 0.37 | 0.14 |
| PCTL (%) | 80 | 55 | 85 | 80 | 75 | 45 | 35 | 60 | 45 | 65 | 45 |

Dam's MPPA: 94
 BW: 65 lbs.
 WW: 653 lbs.
 ADG: 5.7 lbs. 45 Day Test Sept. 7 - Oct. 19
Projected Sale Day Weight: 1520 lbs.

Talk about conversion! This guy gained 5.7 lbs a day on the 45 day test after they came off grass! If you want one that can flat out get it done in the feedlot, here is your guy!
Pen 104

41  **LMG GILLS FRANCHISE 1638 1201**
3/16/21 **4570977**

WILLOW FRANCHISE 1638-1853
4020990

9 MILE FRANCHISE 6305
WILLOW FIREFLY 1638

LMG MISS ROXIE 9625
4283207

STRA TRENDING 618
LMG MISS ROXIE 4111

| | ProS | HB | GM | CED | BW | WW | YW | Milk | Stay | MB | REA |
|----------|------|----|----|-----|------|----|----|------|------|------|------|
| EPD | 72 | 52 | 20 | 11 | -1.4 | 59 | 98 | 22 | 15 | 0.39 | 0.14 |
| PCTL (%) | 85 | 60 | 85 | 70 | 55 | 55 | 50 | 75 | 55 | 55 | 45 |

Dam's MPPA: 96
 BW: 70 lbs.
 WW: 681 lbs.
 ADG: 2.6 lbs. 45 Day Test Sept. 7 - Oct. 19
Projected Sale Day Weight: 1227 lbs.

A dark colored calving ease Franchise son. Use him with confidence!
Pen 104

42



LMG GILLS VIN DIESEL 1276

4/8/21

4571111

LMG GILLS VIN DIESEL 4533
1743620

LMG GILLS VIN DIESEL 7611
LMG MISS DYNETTE 77012

LMG MISS FREEDOM 8892
4097306

CER MR. REDEMPTION 41D
LMG MISS FREEDOM 0030

| | ProS | HB | GM | CED | BW | WW | YW | Milk | Stay | MB | REA |
|----------|------|----|----|-----|----|----|-----|------|------|------|------|
| EPD | 65 | 41 | 24 | 10 | 0 | 70 | 114 | 18 | 16 | 0.28 | 0.14 |
| PCTL (%) | 90 | 80 | 75 | 80 | 85 | 20 | 15 | 95 | 45 | 85 | 45 |

Dam's MPPA: 94

BW: 80 lbs.

WW: 667 lbs.

ADG: 2.1 lbs. 45 Day Test Sept. 7 - Oct. 19

Projected Sale Day Weight: 1280 lbs.

An attractive made Diesel son out of a great cow line.

Pen 104



Lot 43



Lot 44

43



LMG GILLS TRENDING 618 1357

5/13/21

4571249

STRA TRENDING 618
3556536

BIEBER ROLLIN DEEP Y118
HRR COLLEEN 429

LMG MISS RAINBOW 3215
1668023

LUCHT DIAMOND BACK 894
LUCHT RAINBOW 168

| | ProS | HB | GM | CED | BW | WW | YW | Milk | Stay | MB | REA |
|----------|------|----|----|-----|-----|----|----|------|------|------|------|
| EPD | 95 | 65 | 31 | 9 | 0.4 | 59 | 96 | 21 | 18 | 0.43 | 0.11 |
| PCTL (%) | 45 | 30 | 65 | 90 | 85 | 55 | 50 | 85 | 20 | 45 | 50 |

Dam's MPPA: 101

BW: 82 lbs.

ADG: 3.8 lbs. 45 Day Test Sept. 7 - Oct. 19

WW: 920 lbs.

Projected Sale Day Weight: 1453 lbs.

A powerful Trending son with great weights and an even better look!

Pen 201

44



LMG GILLS OPTIMISM 482 1255

5/12/21

4571075

4MC OPTIMISM 482
1725031

LSF OPTIMISM 1107Y
PIE MS D C CRICKET 0284

LMG MISS LASS 2542
1563373

LMG GILLS VIN DIESEL 7611
LMG MISS LASS 5059

| | ProS | HB | GM | CED | BW | WW | YW | Milk | Stay | MB | REA |
|----------|------|----|----|-----|------|----|----|------|------|------|-----|
| EPD | 114 | 87 | 27 | 11 | -0.5 | 64 | 99 | 23 | 19 | 0.26 | 0.2 |
| PCTL (%) | 20 | 5 | 70 | 70 | 75 | 65 | 45 | 75 | 15 | 85 | 40 |

Dam's MPPA: 101

BW: 84 lbs.

ADG: 3.3 lbs. 45 Day Test Sept. 7 - Oct. 19

WW: 905 lbs.

Projected Sale Day Weight: 1457 lbs.

A great bull out of an even better cow line. The Lass cattle are all big middled, long made, excellent uddered and very easy fleshing.

Pen 201

45 **LMG GILLS COOPERSTOWN 1292** 4/23/21 4571133

RLC COOPERSTOWN 131F
3976636

FLYING W HEADLINE 213B
RLC SKYLAR 206D

LMG MISS BLOCKANA 8824
4097484

BIEBER ROLLIN DEEP A198
LMG MISS BLOACKANA 5583

| | ProS | HB | GM | CED | BW | WW | YW | Milk | Stay | MB | REA |
|----------|------|----|----|-----|----|----|-----|------|------|------|------|
| EPD | 107 | 87 | 19 | 12 | 0 | 71 | 105 | 26 | 20 | 0.23 | 0.41 |
| PCTL (%) | 30 | 5 | 85 | 55 | 80 | 15 | 35 | 45 | 3 | 80 | 8 |

Dam's MPPA: 100

BW: 78 lbs.

ADG: 3.6 lbs. 45 Day Test Sept. 7 - Oct. 19

WW: 776 lbs.

Projected Sale Day Weight: 1520 lbs.

Lot 45 is 12.5% Simental 87.5% Red Angus. He should ad a touch of highbred vigor to your next calf crop.

Pen 201



Lot 45 and his dam the day he was born



Lot 46

46 **LMG GILLS MERLIN 949G 1260** 4/16/21 4571083

WSM MERLIN 949G
4145216

WFL MERLIN 018A
WASEM ZINA 907W

LMG MISS ROXIE 8812
4097506

LSF SRR FOREMOST 5314C
LMG MISS ROXIE 3340

| | ProS | HB | GM | CED | BW | WW | YW | Milk | Stay | MB | REA |
|----------|------|----|----|-----|----|----|-----|------|------|------|------|
| EPD | 84 | 44 | 40 | 10 | -1 | 62 | 102 | 28 | 14 | 0.39 | 0.25 |
| PCTL (%) | 65 | 70 | 45 | 80 | 65 | 45 | 40 | 25 | 65 | 50 | 30 |

Dam's MPPA: 98

BW: 77 lbs.

ADG: 2.6 lbs. 45 Day Test Sept. 7 - Oct. 19

WW: 752 lbs.

Projected Sale Day Weight: 1307 lbs.

When you study our maternal lines, there are the same lines that always pop up, Sara, Dynette, Lass, MTX, Poteet, Brandy, and Roxie. Be confident that your selection at Gill Red Angus will take you to the next level.

Pen 201

47 **LMG GILLS SPARTACUS 1297** 5/14/21 4571143

BIEBER SPARTACUS F129
3958047

BIEBER SPARTACUS A193
BIEBER ENCHANTRESS 399D

LMG MISS FREYJA 6635
3711787

LMG MISS FREYJA 4084

| | ProS | HB | GM | CED | BW | WW | YW | Milk | Stay | MB | REA |
|----------|------|----|----|-----|------|----|-----|------|------|-----|------|
| EPD | 68 | 38 | 30 | 12 | -2.2 | 81 | 127 | 30 | 11 | 0.3 | 0.19 |
| PCTL (%) | 85 | 85 | 70 | 55 | 40 | 2 | 4 | 10 | 90 | 75 | 40 |

Dam's MPPA: 105

BW: 82 lbs.

WW: 870 lbs.

ADG: 3.3 lbs. 45 Day Test Sept. 7 - Oct. 19

Projected Sale Day Weight: 1367 lbs.

Near perfect weights on this guy!

Pen 202

48 **LMG GILLS OPTIMISM 482 1350** 5/5/21 4571235

4MC OPTIMISM 482
1725031

LSF OPTIMISM 1107Y
PIE MS D C CRICKET 0284

TMN 110E
3807790

NELS WILL 20X
TMN MAZIE 63B

| | ProS | HB | GM | CED | BW | WW | YW | Milk | Stay | MB | REA |
|----------|------|----|----|-----|------|----|-----|------|------|-----|------|
| EPD | 68 | 38 | 30 | 12 | -2.2 | 81 | 127 | 30 | 11 | 0.3 | 0.19 |
| PCTL (%) | 85 | 85 | 70 | 55 | 40 | 2 | 4 | 10 | 90 | 75 | 40 |

Dam's MPPA: 108

BW: 84 lbs.

WW: 895 lbs.

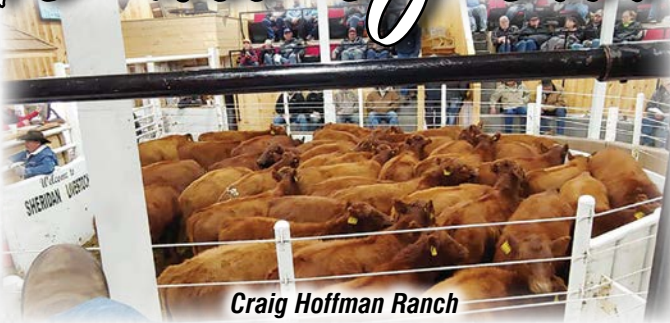
ADG: 2.4 lbs. 45 Day Test Sept. 7 - Oct. 19

Projected Sale Day Weight: 1333 lbs.

We purchased this guy's dam from Thor Nelson of Minnesota. She has done a super job for us.

Pen 202

To all of our Customers...



Craig Hoffman Ranch



Beisch Ranch



Collette Johnson Ranch



Leibel Ranch



Johnson/Strand Ranch



Garrett Ranch



Evenson Ranch



Droog Ranch



Jones Ranch



Amiotte Ranch



Dave Ryckman Ranch



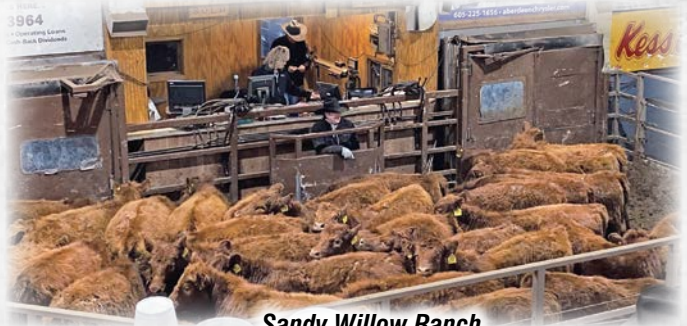
Suchy Ranch



Edinger Ranch



Aberle Ranch



Sandy Willow Ranch



Dahners Ranch



Enright Ranch



Genzler Ranch



Lyndale Johnson Ranch



Chris Reeves Ranch



Gaikowski Ranch



Ellefson Ranch



Frank Ranch



Landis Ranch



Clay Claymore Ranch

Thank You!

"You Buy Our Bulls, We Will Bid on Your Calves"

Pasture Photos from our Customers



Marks Ranch



Senn Ranch



Evenson Ranch



Garrett Ranch



Roseland Ranch



Genzler Ranch



Anderson Ranch



Collette Johnson Ranch



Marshall Ranch



Gropper Ranch



Johnson & Strand Ranch



Metzinger Ranch



Nagel Ranch



Todd Elwein Ranch



Prince Ranch



Ramsey Ranch

49  **LMG GILLS PROSPECT 469 1207**
5/25/21 **4570987**

4MC PROSPECT 469
1725003

LSF PROSPECT 2035Z
CCR CHEROKEE 340-510

LMG MISS 7335
3899103

LSF SRR FOREMOST 5314C
LMG MISS ROXIE 7022

| | ProS | HB | GM | CED | BW | WW | YW | Milk | Stay | MB | REA |
|----------|------|----|----|-----|-----|----|-----|------|------|------|------|
| EPD | 118 | 74 | 44 | 9 | 0.5 | 74 | 122 | 24 | 19 | 0.36 | 0.22 |
| PCTL (%) | 15 | 20 | 35 | 90 | 85 | 10 | 10 | 60 | 15 | 65 | 35 |

Dam's MPPA: 103
BW: 82 lbs.
WW: 866 lbs.
ADG: 3.8 lbs. 45 Day Test Sept. 7 - Oct. 19
Projected Sale Day Weight: 1413 lbs.

Prospect has always pulled through and has done a great job year after year. This guy is no different.

Pen 202

50  **LMG GILLS GRANITE 610G 1348**
4/24/21 **4571231**

FRITZ GRANITE 610G
4169552

FRITZ GOLDEN OSCAR 8006
FRITZ EMILY 310E

LMG MISS ROXIE 8770
4097600

LMG GILLS HARD DRIVE 5006
LMG MISS ROXIE 5633

| | ProS | HB | GM | CED | BW | WW | YW | Milk | Stay | MB | REA |
|----------|------|----|----|-----|-----|----|-----|------|------|------|------|
| EPD | 113 | 59 | 54 | 11 | 0.3 | 78 | 126 | 23 | 16 | 0.62 | 0.19 |
| PCTL (%) | 20 | 40 | 15 | 70 | 85 | 4 | 5 | 70 | 45 | 15 | 40 |

Dam's MPPA: 99
BW: 86 lbs.
WW: 779 lbs.
ADG: 3.1 lbs. 45 Day Test Sept. 7 - Oct. 19
Projected Sale Day Weight: 1473 lbs.

This guy's sire was purchased from Fritz Red Angus. We pulled him out of pasture, put him in the lot so we could load out and collect some semen on him. We went to load him the next morning and he was laying dead on a little hump where he couldn't get up. So we won't have many calves out of him. He was an exciting bull for us. Take advantage.

Pen 202

51  **LMG GILLS TRENDING 618 1295**
4/23/21 **4571139**

STRA TRENDING 618
3556536

BIEBER ROLLIN DEEP Y118
HRR COLLEEN 429

LMG MISS RITA 3294
1667957

LMG GILLS VIN DIESEL 7611
LMG MISS RITA 9124

| | ProS | HB | GM | CED | BW | WW | YW | Milk | Stay | MB | REA |
|----------|------|----|----|-----|------|----|----|------|------|------|------|
| EPD | 95 | 70 | 25 | 9 | -0.2 | 56 | 89 | 20 | 19 | 0.38 | 0.24 |
| PCTL (%) | 45 | 25 | 75 | 90 | 80 | 65 | 65 | 90 | 15 | 55 | 30 |

Dam's MPPA: 100
BW: 89 lbs.
WW: 816 lbs.
ADG: 4 lbs. 45 Day Test Sept. 7 - Oct. 19
Projected Sale Day Weight: 1457 lbs.

Come and get a load of these good Trending sons. Make yourself the most uniform calf crop you have ever had!

Pen 202

52  **LMG GILLS VIN DIESEL 1237**
5/5/21 **4571041**

LMG GILLS VIN DIESEL 4533
1743620

LMG GILLS VIN DIESEL 7611
LMG MISS DYNETTE 77012

LMG MISS GRAND LASS 2548
1563381

LUCHT DIAMOND BACK 894
DJW GRAND LASS 33L

| | ProS | HB | GM | CED | BW | WW | YW | Milk | Stay | MB | REA |
|----------|------|----|----|-----|------|----|-----|------|------|------|------|
| EPD | 68 | 57 | 11 | 12 | -1.1 | 66 | 101 | 22 | 18 | 0.25 | 0.06 |
| PCTL (%) | 85 | 50 | 95 | 55 | 65 | 30 | 40 | 80 | 15 | 85 | 70 |

Dam's MPPA: 101
BW: 76 lbs.
WW: 825 lbs.
ADG: 3.3 lbs. 45 Day Test Sept. 7 - Oct. 19
Projected Sale Day Weight: 1377 lbs.

Low birth and a big weaning. That's where the money is at!

Pen 202

53  **LMG GILLS DIESEL 8413 1346**
4/20/21 **4571227**

LMG GILLS DIESEL 8413
4097858

LMG GILLS VIN DIESEL 4533
LMG MISS MTX 3272

LMG MISS LASS 9514
4282991

PIE LEGEND 468
LMG MISS 7318

| | ProS | HB | GM | CED | BW | WW | YW | Milk | Stay | MB | REA |
|----------|------|----|----|-----|------|----|-----|------|------|------|------|
| EPD | 83 | 53 | 29 | 10 | -0.1 | 63 | 104 | 26 | 16 | 0.37 | 0.15 |
| PCTL (%) | 65 | 55 | 70 | 80 | 80 | 40 | 35 | 40 | 40 | 60 | 45 |

Dam's MPPA: 98
BW: 71 lbs.
WW: 754 lbs.
ADG: 3.6 lbs. 45 Day Test Sept. 7 - Oct. 19
Projected Sale Day Weight: 1330 lbs.

Should be some longevity in this guy. His grandsire will be 9 next spring and we are still using him, while his dam is out of the outstanding Lass cow family.

Pen 202

54 **LMG GILLS SPARTACUS 1275** 5/7/21 4571109

BIEBER SPARTACUS F129
3958047

BIEBER SPARTACUS A193
BIEBER ENCHANTRESS 399D

LMG MISS ROXIE 3335
1668267

LMG GILLS INDEED 8845
LMG MISS ROXIE 6093

| | ProS | HB | GM | CED | BW | WW | YW | Milk | Stay | MB | REA |
|-----------------|------|----|----|-----|----|----|-----|------|------|------|------|
| EPD | 88 | 58 | 30 | 11 | -1 | 74 | 119 | 24 | 15 | 0.37 | 0.01 |
| PCTL (%) | 55 | 45 | 70 | 70 | 65 | 10 | 10 | 60 | 50 | 60 | 75 |

Dam's MPPA: 98

BW: 86 lbs.

ADG: 4.5 lbs. 45 Day Test Sept. 7 - Oct. 19

WW: 820 lbs.

Projected Sale Day Weight: 1503 lbs.

A top quality bull out of a top cow line!

Pen 202



55 **LMG GILLS HARD DRIVE 1225** 5/12/21 4571021

LMG GILLS HARD DRIVE 7003
3802960

BIEBER HARD DRIVE Y120
MLF SARA 30Z

LMG MISS PERFECT 5549
3523316

1DRA VICTORY 0034
MISS PERFECT 945-875

| | ProS | HB | GM | CED | BW | WW | YW | Milk | Stay | MB | REA |
|-----------------|------|----|----|-----|----|----|-----|------|------|------|------|
| EPD | 76 | 31 | 45 | 12 | -1 | 72 | 115 | 32 | 14 | 0.45 | 0.25 |
| PCTL (%) | 75 | 90 | 35 | 55 | 65 | 15 | 15 | 4 | 70 | 45 | 30 |

Dam's MPPA: 110

BW: 86 lbs.

WW: 912 lbs.

ADG: 3.8 lbs. 45 Day Test Sept. 7 - Oct. 19

Projected Sale Day Weight: 1413 lbs.

Hard Drive out of a Victory daughter. You will get great daughters out of this guy!!!

Pen 203

56 **LMG GILLS GRANITE 610G 1240** 4/25/21 4571047

FRITZ GRANITE 610G
4169552

FRITZ GOLDEN OSCAR 8006
FRITZ EMILY 310E

LMG MISS NEW TREND 9605
4283169

4MC OPTIMISM 482
LMG MISS NEW TREND 2540

| | ProS | HB | GM | CED | BW | WW | YW | Milk | Stay | MB | REA |
|-----------------|------|----|----|-----|------|----|-----|------|------|------|------|
| EPD | 35 | 88 | 48 | 12 | -0.3 | 69 | 111 | 31 | 20 | 0.57 | 0.08 |
| PCTL (%) | 95 | 4 | 30 | 55 | 80 | 20 | 20 | 10 | 3 | 20 | 65 |

Dam's MPPA: 103

BW: 84 lbs.

WW: 841 lbs.

ADG: 3.1 lbs. 45 Day Test Sept. 7 - Oct. 19

Projected Sale Day Weight: 1333 lbs.

Another good Granite son, with great weights to him!

Pen 203

57 **LMG GILLS VIN DIESEL 1351** 5/16/21 4571237

LMG GILLS VIN DIESEL 4533
1743620

LMG GILLS VIN DIESEL 7611
LMG MISS DYNETTE 77012

LMG MISS CHEROKETTE 6519
3711853

4MC PROSPECT 469
LMG MISS CHEROKETTE 4174

| | ProS | HB | GM | CED | BW | WW | YW | Milk | Stay | MB | REA |
|-----------------|------|----|----|-----|-----|----|-----|------|------|------|------|
| EPD | 77 | 49 | 28 | 9 | 0.8 | 79 | 127 | 18 | 17 | 0.29 | 0.24 |
| PCTL (%) | 75 | 60 | 70 | 90 | 90 | 3 | 4 | 95 | 40 | 80 | 30 |

Dam's MPPA: 103

BW: 96 lbs.

WW: 806 lbs.

ADG: 3.3 lbs. 45 Day Test Sept. 7 - Oct. 19

Projected Sale Day Weight: 1317 lbs.

We are offering a lot of these good Diesel sons as well. You will like them.

Pen 203

58  **LMG GILLS MERLIN 949G 1279**
4/16/21 4571115

WSM MERLIN 949G
4145216

WFL MERLIN 018A
WASEM ZINA 907W

LMG MISS 7211
3899341

BIEBER HARD DRIVE Y120
LUCHT MISS BOYD 19

| | ProS | HB | GM | CED | BW | WW | YW | Milk | Stay | MB | REA |
|-----------------|------|----|----|-----|----|----|-----|------|------|------|------|
| EPD | 71 | 35 | 37 | 11 | -1 | 68 | 105 | 27 | 13 | 0.41 | 0.37 |
| PCTL (%) | 85 | 85 | 55 | 70 | 65 | 20 | 30 | 30 | 75 | 50 | 15 |

Dam's MPPA: 101
BW: 80 lbs.
WW: 768 lbs.
ADG: 3.6 lbs. 45 Day Test Sept. 7 - Oct. 19
Projected Sale Day Weight: 1400 lbs.

Lots and lots of the good Merlin sons. Take your pick or take a load.
Pen 203

59  **LMG GILLS COOPERSTOWN 1345**
5/7/21 4571225

RLC COOPERSTOWN 131F
3976636

FLYING W HEADLINE 213B
RLC SKYLAR 206D

LMG MISS DYNETTE 4091
1743472

LMG GILLS INDEED 8845
LMG MISS DYNETTE 8314

| | ProS | HB | GM | CED | BW | WW | YW | Milk | Stay | MB | REA |
|-----------------|------|----|----|-----|-----|----|----|------|------|------|------|
| EPD | 86 | 79 | 6 | 10 | 0.6 | 65 | 97 | 23 | 20 | 0.19 | 0.08 |
| PCTL (%) | 60 | 10 | 95 | 80 | 90 | 30 | 50 | 70 | 3 | 95 | 60 |

Dam's MPPA: 96
BW: 84 lbs.
WW: 872 lbs.
ADG: 6.4 lbs. 45 Day Test Sept. 7 - Oct. 19
Projected Sale Day Weight: 1540 lbs.

I love the weights, eye appeal and pedigree!
Pen 203

60  **LMG GILLS GRANITE 610G 6580**
3/17/21 4571647

FRITZ GRANITE 610G
4169552

FRITZ GOLDEN OSCAR 8006
FRITZ EMILY 310E

LMG MISS BLOCKANA 6580
3556371

LMG GILLS SUN KING 3503
LMG MISS BLOCKANA 4032

| | ProS | HB | GM | CED | BW | WW | YW | Milk | Stay | MB | REA |
|-----------------|------|----|----|-----|-----|----|-----|------|------|------|------|
| EPD | 129 | 73 | 55 | 11 | 0.7 | 72 | 117 | 28 | 19 | 0.65 | 0.12 |
| PCTL (%) | 10 | 20 | 15 | 70 | 90 | 15 | 15 | 20 | 10 | 15 | 55 |

Dam's MPPA: 97
BW: 90 lbs.
WW: 740 lbs.
ADG: 2.6 lbs. 45 Day Test Sept. 7 - Oct. 19
Projected Sale Day Weight: 1377 lbs.

An excellent numbered Granite son with a great look to him.
Pen 203

61  **LMG GILLS FRANCHISE 1638 1267**
3/7/21 4571095

WILLOW FRANCHISE 1638-1853
4020990

9 MILE FRANCHISE 6305
WILLOW FIREFLY 1638

LMG MISS REMON 9584
4283129

WILLOW RINGSIDE 1313-1753
LMG MISS REMON 5586

| | ProS | HB | GM | CED | BW | WW | YW | Milk | Stay | MB | REA |
|-----------------|------|----|----|-----|------|----|-----|------|------|------|------|
| EPD | 69 | 36 | 33 | 12 | -1.6 | 63 | 109 | 31 | 13 | 0.43 | 0.03 |
| PCTL (%) | 85 | 85 | 60 | 55 | 55 | 40 | 25 | 10 | 75 | 45 | 75 |

Dam's MPPA: 104
BW: 75 lbs.
WW: 836 lbs.
ADG: 2.4 lbs. 45 Day Test Sept. 7 - Oct. 19
Projected Sale Day Weight: 1373 lbs.

Lot 61 is another good low birth weight, high weaning weight Franchise son for you to take a look at.
Pen 203

62  **LMG GILLS OPTIMISM 482 1319**
5/25/21 4571181

4MC OPTIMISM 482
1725031

LSF OPTIMISM 1107Y
PIE MS D C CRICKET 0284

LMG MISS FREYJA 3275
1668273

SANDERSON KING ROLLO 22V
7009 LMG

| | ProS | HB | GM | CED | BW | WW | YW | Milk | Stay | MB | REA |
|-----------------|------|----|----|-----|------|----|----|------|------|------|------|
| EPD | 125 | 88 | 37 | 11 | -0.8 | 57 | 90 | 25 | 19 | 0.34 | 0.16 |
| PCTL (%) | 10 | 4 | 50 | 70 | 70 | 65 | 65 | 50 | 10 | 70 | 45 |

Dam's MPPA: 100
BW: 80 lbs.
WW: 908 lbs.
ADG: 4 lbs. 45 Day Test Sept. 7 - Oct. 19
Projected Sale Day Weight: 1497 lbs.

Take a look at this powerful Optimism son.
Pen 203

63  **LMG GILLS HARD DRIVE 1277**
5/11/21 4571113

LMG GILLS HARD DRIVE 7003 3802960 BIEBER HARD DRIVE Y120
MLF SARA 30Z

LMG MISS DIANNA 2577 1597980 RED NORTHLINE IGNITION 125W
LMG DIANN 3076

| | ProS | HB | GM | CED | BW | WW | YW | Milk | Stay | MB | REA |
|-----------------|------|----|----|-----|-----|----|-----|------|------|------|-----|
| EPD | 89 | 33 | 56 | 10 | 0.3 | 65 | 108 | 30 | 14 | 0.44 | 0.2 |
| PCTL (%) | 55 | 85 | 15 | 80 | 85 | 60 | 25 | 15 | 65 | 40 | 35 |

Dam's MPPA: 102
BW: 86 lbs.
WW: 842 lbs.
ADG: 4.8 lbs. 45 Day Test Sept. 7 - Oct. 19
Projected Sale Day Weight: 1497 lbs.

Another top Hard Drive son who has great numbers and eye appeal!
Pen 203

64  **LMG GILLS OPTIMISM 482 1352**
4/29/21 4571239

4MC OPTIMISM 482 1725031 LSF OPTIMISM 1107Y
PIE MS D C CRICKET 0284

LUCHT VERDALE 160 1495770 LUCHT ROMEO R052
LUCHT VERDALE R01

| | ProS | HB | GM | CED | BW | WW | YW | Milk | Stay | MB | REA |
|-----------------|------|----|----|-----|------|----|----|------|------|------|-------|
| EPD | 121 | 84 | 37 | 14 | -3.7 | 55 | 88 | 28 | 18 | 0.37 | -0.01 |
| PCTL (%) | 15 | 10 | 55 | 25 | 15 | 65 | 65 | 25 | 20 | 60 | 80 |

Dam's MPPA: 102
BW: 82 lbs.
WW: 801 lbs.
ADG: 4 lbs. 45 Day Test Sept. 7 - Oct. 19
Projected Sale Day Weight: 1457 lbs.

Check this Optimism son out. Come get him.
Pen 203

65  **LMG GILLS FRANCHISE 1638 15G**
3/11/21 4571425

WILLOW FRANCHISE 1638-1853 4020990 9 MILE FRANCHISE 6305
WILLOW FIREFLY 1638

THOR CHUBS 15G 4182166 PCC DC CHUBS 5005C
TMN 110E

| | ProS | HB | GM | CED | BW | WW | YW | Milk | Stay | MB | REA |
|-----------------|------|----|----|-----|------|----|----|------|------|------|------|
| EPD | 74 | 57 | 17 | 14 | -2.2 | 56 | 92 | 28 | 15 | 0.31 | 0.03 |
| PCTL (%) | 80 | 50 | 90 | 25 | 45 | 65 | 60 | 25 | 50 | 75 | 70 |

Dam's MPPA: 94
BW: 77 lbs.
WW: 653 lbs.
ADG: 4.3 lbs. 45 Day Test Sept. 7 - Oct. 19
Projected Sale Day Weight: 1420 lbs.

We purchased this Franchise dam from Thor Nelson a few years back and she has done a great job for us.
Pen 203

66  **LMG GILLS SUN KING 3503 5589**
3/30/21 4571625

LMG GILLS SUN KING 3503 1644890 LARSON SUN KING 016
VANWYE QUEENETTE 35Y

LMG MISS BLOACKANA 5589 3523566 LMG GILLS WIDE SPREAD 0904
LUCHT GRAND BLOCKANA 246

| | ProS | HB | GM | CED | BW | WW | YW | Milk | Stay | MB | REA |
|-----------------|------|----|----|-----|------|----|----|------|------|------|------|
| EPD | 91 | 52 | 39 | 11 | -1.1 | 55 | 88 | 30 | 16 | 0.46 | 0.09 |
| PCTL (%) | 55 | 55 | 50 | 70 | 65 | 70 | 70 | 10 | 40 | 40 | 60 |

Dam's MPPA: 100
BW: 88 lbs. **ADG:** 2.9 lbs. 45 Day Test Sept. 7 - Oct. 19
WW: 719 lbs. **Projected Sale Day Weight:** 1460 lbs.

An impressive bull that is out of the good Blockana cow line. Keep the daughters!!!
Pen 203



Typical Gill Red Angus cow/calf pair

67  **LMG GILLS MERLIN 949G 1330**
6/1/21 4648729

WSM MERLIN 949G
4145216

WFL MERLIN 018A
WASEM ZINA 907W

LMG MISS MTX 1330
1494531

LMG GILLS VIN DIESEL 7611
LMG MISS MTX 5021

| | ProS | HB | GM | CED | BW | WW | YW | Milk | Stay | MB | REA |
|----------|------|----|----|-----|------|----|----|------|------|------|------|
| EPD | 63 | 54 | 9 | 11 | -1.4 | 58 | 90 | 23 | 16 | 0.19 | 0.15 |
| PCTL (%) | 90 | 55 | 95 | 70 | 55 | 60 | 65 | 70 | 40 | 95 | 45 |

Dam's MPPA: 94
BW: 85 lbs.
WW: 776 lbs.
ADG: 3.6 lbs. 45 Day Test Sept. 7 - Oct. 19
Projected Sale Day Weight: 1360 lbs.

Lot 67 is another eye grabber out of Merlin and goes back to the great MTX cow line!
Pen 203

68  **LMG GILLS DIESEL 8413 1274**
5/12/21 4571107

LMG GILLS DIESEL 8413
4097858

LMG GILLS VIN DIESEL 4533
LMG MISS MTX 3272

LMG MISS OLIVE 9686
4283325

STRA TRENDING 618
MESSMER OLIVE 377R

| | ProS | HB | GM | CED | BW | WW | YW | Milk | Stay | MB | REA |
|----------|------|----|----|-----|------|----|----|------|------|------|------|
| EPD | 69 | 44 | 25 | 10 | -0.4 | 55 | 90 | 22 | 16 | 0.36 | 0.06 |
| PCTL (%) | 85 | 70 | 75 | 80 | 75 | 70 | 65 | 75 | 35 | 65 | 65 |

Dam's MPPA: 103
BW: 82 lbs.
WW: 852 lbs.
ADG: 3.8 lbs. 45 Day Test Sept. 7 - Oct. 19
Projected Sale Day Weight: 1403 lbs.

You will like this guy!
Pen 203

69  **LMG GILLS STOCKMARKET 1285**
4/19/21 4571123

BIEBER CL STOCKMARKET E119
3751659

PIE STOCKMAN 4051
BIEBER CL ADELLE 475C

LMG MISS ROXIE 9536
4283033

STRA TRENDING 618
LMG MISS ROXIE 7022

| | ProS | HB | GM | CED | BW | WW | YW | Milk | Stay | MB | REA |
|----------|------|----|----|-----|------|----|-----|------|------|------|------|
| EPD | 111 | 64 | 47 | 13 | -2.2 | 65 | 108 | 26 | 18 | 0.75 | 0.22 |
| PCTL (%) | 25 | 35 | 30 | 40 | 40 | 35 | 25 | 40 | 20 | 5 | 35 |

Dam's MPPA: 106
BW: 80 lbs.
WW: 911 lbs.
ADG: 4.5 lbs. 45 Day Test Sept. 7 - Oct. 19
Projected Sale Day Weight: 1503 lbs.

Lot 69 goes back to the great Roxie line again and it shows as he has over a 900 lbs weaning weight!
Pen 203



Kristen and Bryan at Glacier National Park during the National Red Angus Convention

70  **LMG GILLS RINGSIDE 1263**
5/10/21 4571089

WILLOW RINGSIDE 1313-1753
3806584

HXC DECLARATION 5504C
WILLOW JACKIE 1313

LMG GILLS
4098112

NON-REGISTERD SIRE
LMG MISS JESSA 5609

| | ProS | HB | GM | CED | BW | WW | YW | Milk | Stay | MB | REA |
|----------|------|----|----|-----|------|----|----|------|------|------|------|
| EPD | 67 | 16 | 51 | 11 | -2.6 | 43 | 74 | 20 | 11 | 0.41 | 0.09 |
| PCTL (%) | 85 | 95 | 25 | 70 | 35 | 90 | 90 | 90 | 90 | 50 | 60 |

Dam's MPPA: 99
BW: 78 lbs.
WW: 765 lbs.
ADG: 4 lbs. 45 Day Test Sept. 7 - Oct. 19
Projected Sale Day Weight: 1437 lbs.

Lot 70 is registered at Category III. He is 100% Red Angus, but has an unknown sire in the pedigree. His EPD's reflect the missing sire and aren't as impressive because of it. Category III sires do not qualify for the Red Angus Yellow tag.
Pen 204

71



LMG GILLS FRANCHISE 1638 1212

3/9/21

4570995

WILLOW FRANCHISE 1638-1853
4020990

9 MILE FRANCHISE 6305
WILLOW FIREFLY 1638

LMG MISS MAXINE 9683
4283319

LMG GILLS HARD DRIVE 5006
LMG MISS MAXINE 6561

| | ProS | HB | GM | CED | BW | WW | YW | Milk | Stay | MB | REA |
|----------|------|----|----|-----|------|----|-----|------|------|------|------|
| EPD | 76 | 38 | 38 | 12 | -1.2 | 69 | 114 | 30 | 13 | 0.46 | 0.28 |
| PCTL (%) | 75 | 80 | 50 | 55 | 65 | 20 | 15 | 10 | 75 | 35 | 20 |

Dam's MPPA: 104

BW: 77 lbs.

ADG: 2.9 lbs. 45 Day Test Sept. 7 - Oct. 19

WW: 853 lbs.

Projected Sale Day Weight: 1350 lbs.

Take a look at this impressive guy. You will like him!

Pen 204



Lot 71

72



LMG GILLS MERLIN 949G 8759

4/2/21

4571703

WSM MERLIN 949G
4145216

WFL MERLIN 018A
WASEM ZINA 907W

LMG MISS ROXIE 8759
4097620

LSF SRR FOREMOST 5314C
LMG MISS ROXIE 7316

| | ProS | HB | GM | CED | BW | WW | YW | Milk | Stay | MB | REA |
|----------|------|----|----|-----|------|----|----|------|------|------|------|
| EPD | 76 | 44 | 32 | 9 | -0.8 | 60 | 96 | 29 | 16 | 0.38 | 0.21 |
| PCTL (%) | 75 | 75 | 65 | 90 | 80 | 50 | 50 | 15 | 40 | 55 | 30 |

Dam's MPPA: 95

BW: 86 lbs.

ADG: 4 lbs. 45 Day Test Sept. 7 - Oct. 19

WW: 724 lbs.

Projected Sale Day Weight: 1407 lbs.

This is another big stout Merlin son out of a top notch Roxie cow.

Pen 204



Steers we purchased from a customer coming off the truck



Lot 73

73



LMG GILLS PROSPECT 1296

5/20/21

4571141

4MC PROSPECT 469
1725003

LSF PROSPECT 2035Z
CCR CHEROKEE 340-510

LMG MISS 7214
3899335

LSF SRR FOREMOST 5314C
LMG MISS RAINBOW 4017

| | ProS | HB | GM | CED | BW | WW | YW | Milk | Stay | MB | REA |
|----------|------|----|----|-----|----|----|-----|------|------|------|------|
| EPD | 119 | 71 | 49 | 8 | 1 | 75 | 125 | 25 | 19 | 0.43 | 0.17 |
| PCTL (%) | 15 | 20 | 30 | 95 | 90 | 10 | 5 | 50 | 15 | 50 | 45 |

Dam's MPPA: 103

BW: 84 lbs.

ADG: 3.3 lbs. 45 Day Test Sept. 7 - Oct. 19

WW: 880 lbs.

Projected Sale Day Weight: 1387 lbs.

A Prospect son out of a Foremost daughter. This is a great cross!

Pen 204

74 **LMG GILLS COOPERSTOWN 1269**
 5/10/21 **4571099**

RLC COOPERSTOWN 131F
 3976636

FLYING W HEADLINE 213B
 RLC SKYLAR 206D

LMG MISS BLOCKANA 8777
 4097586

PIE LEGEND 468
 FEDDES BLOCKANA X133

| | ProS | HB | GM | CED | BW | WW | YW | Milk | Stay | MB | REA |
|----------|------|----|----|-----|-----|----|----|------|------|------|------|
| EPD | 95 | 85 | 9 | 11 | 0.6 | 64 | 99 | 28 | 20 | 0.21 | 0.21 |
| PCTL (%) | 45 | 10 | 95 | 70 | 90 | 35 | 45 | 25 | 4 | 90 | 30 |

Dam's MPPA: 96

BW: 86 lbs.

ADG: 4 lbs. 45 Day Test Sept. 7 - Oct. 19

WW: 754 lbs.

Projected Sale Day Weight: 1387 lbs.

I like this guy! He goes back to Blockana as well. The daughters should be great!

Pen 204



75 **LMG GILLS HARD DRIVE 1230**
 5/29/21 **4571027**

LMG GILLS HARD DRIVE 7003
 3802960

BIEBER HARD DRIVE Y120
 MLF SARA 30Z

LMG MISS BLOCKANA 3226
 1668022

FEDDES COMANDER Y104
 LUCHT BLOCKANA 115

| | ProS | HB | GM | CED | BW | WW | YW | Milk | Stay | MB | REA |
|----------|------|----|----|-----|------|----|-----|------|------|------|------|
| EPD | 107 | 47 | 60 | 13 | -2.2 | 63 | 103 | 28 | 14 | 0.49 | 0.34 |
| PCTL (%) | 30 | 70 | 15 | 40 | 45 | 40 | 35 | 25 | 60 | 35 | 17 |

Dam's MPPA: 105

BW: 82 lbs.

ADG: 3.3 lbs. 45 Day Test Sept. 7 - Oct. 19

WW: 900 lbs.

Projected Sale Day Weight: 1417 lbs.

The daughters should be great out of this one. We didn't get a lot of sons and daughters out of Feddes Comander, but we purchased him mainly because his dam was a great cow. You cross her with Blockana, and this will get interesting!

Pen 204



Comanders's dam - Maternal Grandam to Lot 75

76  **LMG GILLS MERLIN 949G 1224**
4/26/21 4571019

WSM MERLIN 949G
4145216

WFL MERLIN 018A
WASEM ZINA 907W

LMG MISS ZINA 6586
3556376

LMG GILLS SUN KING 3503
LMG MISS ZINA 4059

| | ProS | HB | GM | CED | BW | WW | YW | Milk | Stay | MB | REA |
|----------|------|----|----|-----|------|----|----|------|------|------|------|
| EPD | 67 | 43 | 24 | 9 | -0.5 | 63 | 97 | 33 | 14 | 0.36 | 0.24 |
| PCTL (%) | 65 | 75 | 75 | 90 | 75 | 40 | 50 | 2 | 60 | 60 | 30 |

Dam's MPPA: 107
BW: 70 lbs.
WW: 740 lbs.
ADG: 4 lbs. 45 Day Test Sept. 7 - Oct. 19
Projected Sale Day Weight: 1407 lbs.

Lot 76 is another deep bodied Merlin son.
Pen 204

77  **LMG GILLS MERLIN 949G 1252**
4/20/21 4571069

WSM MERLIN 949G
4145216

WFL MERLIN 018A
WASEM ZINA 907W

LMG MISS LYDIA 4014
1743406

LJC LEGACY 467W
LMG MISS LYDIA 2549

| | ProS | HB | GM | CED | BW | WW | YW | Milk | Stay | MB | REA |
|----------|------|----|----|-----|------|----|----|------|------|------|------|
| EPD | 56 | 37 | 19 | 10 | -1.5 | 64 | 99 | 28 | 14 | 0.31 | 0.16 |
| PCTL (%) | 95 | 85 | 85 | 80 | 55 | 35 | 45 | 25 | 60 | 75 | 40 |

Dam's MPPA: 102
BW: 83 lbs. ADG: 3.8 lbs. 45 Day Test Sept. 7 - Oct. 19
WW: 790 lbs. Projected Sale Day Weight: 1433 lbs.

Half brother to Lot 76 and several other bulls in the sale as well.
Pen 204



78  **LMG GILLS ALLEGIANCE 4103**
4/17/21 4571601

HXC ALLEGIANCE 5502C
3494126

LEACHMAN PLEDGE A282Z
HXC 100Y

LMG MISS ROXIE 4103
1743484

C-T GRAND STATEMENT 1025
LMG MISS ROXIE 6005

| | ProS | HB | GM | CED | BW | WW | YW | Milk | Stay | MB | REA |
|----------|------|----|----|-----|-----|----|-----|------|------|------|------|
| EPD | 104 | 47 | 57 | 9 | 0.1 | 65 | 108 | 29 | 16 | 0.63 | 0.12 |
| PCTL (%) | 30 | 70 | 15 | 90 | 85 | 30 | 25 | 15 | 40 | 10 | 50 |

Dam's MPPA: 101
BW: 86 lbs.
WW: 779 lbs.
ADG: 4.5 lbs. 45 Day Test Sept. 7 - Oct. 19
Projected Sale Day Weight: 1453 lbs.

An Allegiance out of a top Roxie cow line.
Pen 204



Brothers together again - Kenny, Bryan, Lyle, & Brent



Gracen playing basketball

79 **LMG GILLS TRENDING 618 1270**
 5/25/21 4571101

STRA TRENDING 618
 3556536

BIEBER ROLLIN DEEP Y118
 HRR COLLEEN 429

LMG MISS 7284
 3899201

LSF SRR FOREMOST 5314C
 LMG MISS JESSA 8303

| | ProS | HB | GM | CED | BW | WW | YW | Milk | Stay | MB | REA |
|-----------------|------|----|----|-----|----|----|----|------|------|------|-----|
| EPD | 96 | 55 | 41 | 8 | 0 | 58 | 95 | 22 | 17 | 0.51 | 0.2 |
| PCTL (%) | 45 | 55 | 45 | 95 | 85 | 60 | 50 | 70 | 25 | 30 | 30 |

Dam's MPPA: 101

BW: 85 lbs.

ADG: 2.1 lbs. 45 Day Test Sept. 7 - Oct. 19

WW: 891 lbs.

Projected Sale Day Weight: 1210 lbs.

Another excellent bull who weaned off heavy!

Pen 204



80 **LMG GILLS COOPERSTOWN 1220**
 4/13/21 4571011

RLC COOPERSTOWN 131F
 3976636

FLYING W HEADLINE 213B
 RLC SKYLAR 206D

LMG MISS 7321
 3899129

LSF HERDBUILDER 1058Y
 LMG MISS DAKOTA RUBY 5509

| | ProS | HB | GM | CED | BW | WW | YW | Milk | Stay | MB | REA |
|-----------------|------|----|----|-----|------|----|----|------|------|------|------|
| EPD | 110 | 84 | 25 | 13 | -1.8 | 63 | 96 | 32 | 19 | 0.31 | 0.22 |
| PCTL (%) | 25 | 10 | 75 | 40 | 50 | 40 | 50 | 3 | 15 | 75 | 30 |

Dam's MPPA: 104

BW: 70 lbs.

WW: 795 lbs.

ADG: 3.6 lbs. 45 Day Test Sept. 7 - Oct. 19

Projected Sale Day Weight: 1330 lbs.

Lot 80 is a powerful Cooperstown son who was born light and weaned off heavy!

Pen 204

81 **LMG GILLS DIESEL 8413 1323**
 4/25/21 4571189

LMG GILLS DIESEL 8413
 4097858

LMG GILLS VIN DIESEL 4533
 LMG MISS MTX 3272

LMG MISS BLOCKANA 9707
 4283367

4MC PROSPECT 469
 LMG MISS BLOACKANA 5531

| | ProS | HB | GM | CED | BW | WW | YW | Milk | Stay | MB | REA |
|-----------------|------|----|----|-----|-----|----|-----|------|------|------|------|
| EPD | 78 | 53 | 26 | 9 | 0.5 | 66 | 107 | 21 | 17 | 0.31 | 0.09 |
| PCTL (%) | 75 | 55 | 75 | 90 | 85 | 30 | 25 | 85 | 25 | 75 | 60 |

Dam's MPPA: 98

BW: 85 lbs.

WW: 743 lbs.

ADG: 3.8 lbs. 45 Day Test Sept. 7 - Oct. 19

Projected Sale Day Weight: 1363 lbs.

Both this guy's sire and dam lines are known for their longevity. This guy's great grand-sire, Vin Diesel, was 11 when he finally retired. The Blockana line is one of the oldest in the breed. Use with confidence!

Pen 204



Quayde practicing his driving skills.



Evelyn (#40) and her basketball team

GILL RED ANGUS

82 **LMG GILLS COOPERSTOWN 8715** 5/2/21 4571697

RLC COOPERSTOWN 131F
3976636

FLYING W HEADLINE 213B
RLC SKYLAR 206D

LMG MISS BRANDY 8715
4097706

LSF SRR FOREMOST 5314C
LMG MISS BRANDY 6314

| | ProS | HB | GM | CED | BW | WW | YW | Milk | Stay | MB | REA |
|----------|------|----|----|-----|------|----|----|------|------|------|------|
| EPD | 93 | 64 | 30 | 11 | -0.3 | 58 | 93 | 24 | 19 | 0.27 | 0.13 |
| PCTL (%) | 50 | 65 | 65 | 70 | 80 | 60 | 55 | 65 | 15 | 75 | 45 |

Dam's MPPA: 96

BW: 86 lbs.

ADG: 4.3 lbs. 45 Day Test Sept. 7 - Oct. 19

WW: 714 lbs.

Projected Sale Day Weight: 1450 lbs.

This line is known for the extra depth of body and length of spine!

Pen 204



Maternal grandam of Lot 82

83 **LMG GILLS TRENDING 618 1257** 4/24/21 4571079

STRA TRENDING 618
3556536

BIEBER ROLLIN DEEP Y118
HRR COLLEEN 429

LMG MISS 7276
3899217

LSF SRR FOREMOST 5314C
LMG MISS MAXINE 5568

| | ProS | HB | GM | CED | BW | WW | YW | Milk | Stay | MB | REA |
|----------|------|----|----|-----|-----|----|-----|------|------|------|------|
| EPD | 114 | 74 | 40 | 9 | 0.2 | 63 | 101 | 19 | 19 | 0.47 | 0.41 |
| PCTL (%) | 20 | 15 | 45 | 90 | 85 | 40 | 40 | 95 | 15 | 35 | 15 |

Dam's MPPA: 98

BW: 70 lbs.

WW: 601 lbs.

ADG: 3.8 lbs. 45 Day Test Sept. 7 - Oct. 19

Projected Sale Day Weight: 1353 lbs.

Lot 83 is 12.5% Simmental 87.5% Red Angus. He should add a touch of hybrid vigor to your next calf crop.

Pen 204

84 **LMG GILLS DOMAIN 8041 1344** 4/14/21 4571223

GILL DOMAIN 8041
4150812

3SCC DOMAIN A163
RHODES 298Y NIKKIE 660

LMG MISS VERDALE 9565
4283091

LMG GILLS STATEMENT 2066
LUCHT VERDALE 160

| | ProS | HB | GM | CED | BW | WW | YW | Milk | Stay | MB | REA |
|----------|------|----|----|-----|------|----|-----|------|------|------|-----|
| EPD | 71 | 35 | 36 | 12 | -2.3 | 61 | 102 | 23 | 13 | 0.43 | 0 |
| PCTL (%) | 85 | 85 | 55 | 60 | 40 | 45 | 40 | 75 | 75 | 40 | 75 |

Dam's MPPA: 97

BW: 70 lbs.

ADG: 3.1 lbs. 45 Day Test Sept. 7 - Oct. 19

WW: 726 lbs.

Projected Sale Day Weight: 1293 lbs.

A low birth weight bull out of the good Gills Domain son.

Pen 204



GILL RED ANGUS

You buy our bulls, we bid on your calves!

85  **LMG GILLS REDEMPTION 1306**
4/26/21 4571157

LMG GILLS REDEMPTION 8320 CER MR. REDEMPTION 41D
4098040 LMG MISS CINNAMON 4201

LMG MISS 7293 4MC OPTIMISM 482
3899183 LMG MISS MTX 4134

| | ProS | HB | GM | CED | BW | WW | YW | Milk | Stay | MB | REA |
|----------|------|----|----|-----|------|----|----|------|------|------|------|
| EPD | 115 | 73 | 42 | 11 | -0.6 | 60 | 99 | 22 | 19 | 0.36 | 0.08 |
| PCTL (%) | 20 | 20 | 40 | 70 | 75 | 50 | 45 | 75 | 10 | 60 | 60 |

Dam's MPPA: 101
BW: 88 lbs.
WW: 754 lbs.
ADG: 3.6 lbs. 45 Day Test Sept. 7 - Oct. 19
Projected Sale Day Weight: 1360 lbs.

Out of the good MTX line!
Pen 204

86  **LMG GILLS HARD DRIVE 1253**
5/26/21 4571071

LMG GILLS HARD DRIVE 7003 BIEBER HARD DRIVE Y120
3802960 MLF SARA 30Z

LMG MISS SUSETTE 6544 LMG GILLS VIN DIESEL 7611
3711913 LMG MISS SUSETT 0074

| | ProS | HB | GM | CED | BW | WW | YW | Milk | Stay | MB | REA |
|----------|------|----|----|-----|------|----|-----|------|------|------|------|
| EPD | 91 | 47 | 43 | 11 | -1.4 | 68 | 110 | 29 | 17 | 0.38 | 0.36 |
| PCTL (%) | 55 | 65 | 40 | 70 | 60 | 25 | 25 | 15 | 25 | 55 | 20 |

Dam's MPPA: 107
BW: 80 lbs.
WW: 903 lbs.
ADG: 5.2 lbs. 45 Day Test Sept. 7 - Oct. 19
Projected Sale Day Weight: 1373 lbs.

Take a look at this good bull with great weights!
Pen 301

87  **LMG GILLS TRENDING 618 1229**
6/2/21 4571025

STRA TRENDING 618 BIEBER ROLLIN DEEP Y118
3556536 HRR COLLEEN 429

LMG MISS MTX 6575 FLYING W GAME PLAN 189Y
3556366 LMG MISS MTX 1364

| | ProS | HB | GM | CED | BW | WW | YW | Milk | Stay | MB | REA |
|----------|------|----|----|-----|------|----|-----|------|------|------|------|
| EPD | 91 | 47 | 43 | 11 | -1.4 | 68 | 110 | 29 | 17 | 0.38 | 0.36 |
| PCTL (%) | 55 | 65 | 40 | 70 | 60 | 25 | 25 | 15 | 25 | 55 | 20 |

Dam's MPPA: 97
BW: 86 lbs.
WW: 775 lbs.
ADG: 4 lbs. 45 Day Test Sept. 7 - Oct. 19
Projected Sale Day Weight: 1297 lbs.

Lot 87 is a high quality Trending son with a lower birth weight.
Pen 301

88  **LMG GILLS TRENDING 618 1215**
4/30/21 4571001

STRA TRENDING 618 BIEBER ROLLIN DEEP Y118
3556536 HRR COLLEEN 429

LMG MISS 7255 KUHNS COUNTOUR B026
3899257 LMG MISS POTEET 3309

| | ProS | HB | GM | CED | BW | WW | YW | Milk | Stay | MB | REA |
|----------|------|----|----|-----|------|----|-----|------|------|------|------|
| EPD | 91 | 47 | 43 | 11 | -1.4 | 68 | 110 | 29 | 17 | 0.38 | 0.36 |
| PCTL (%) | 55 | 65 | 40 | 70 | 60 | 25 | 25 | 15 | 25 | 55 | 20 |

Dam's MPPA: 98
BW: 78 lbs. ADG: 2.4 lbs. 45 Day Test Sept. 7 - Oct. 19
WW: 859 lbs. **Projected Sale Day Weight: 1213 lbs.**

Another low birth weight Trending son with a lot of style.
Pen 301



Kendyl clogging



89  **LMG GILLS GRANITE 610G 1329**
4/19/21 4571197

FRITZ GRANITE 610G
4169552

FRITZ GOLDEN OSCAR 8006
FRITZ EMILY 310E

LMG MISS ROXIE 9668
4283289

LMG GILLS VIN DIESEL 4533
LMG MISS ROXIE 2547

| | ProS | HB | GM | CED | BW | WW | YW | Milk | Stay | MB | REA |
|-----------------|------|----|----|-----|-----|----|-----|------|------|------|-----|
| EPD | 105 | 69 | 36 | 11 | 0.4 | 75 | 121 | 24 | 19 | 0.49 | 0.1 |
| PCTL (%) | 30 | 25 | 85 | 70 | 90 | 10 | 5 | 65 | 15 | 30 | 60 |

Dam's MPPA: 98

BW: 83 lbs.

ADG: 5 lbs. 45 Day Test Sept. 7 - Oct. 19

WW: 745 lbs.

Projected Sale Day Weight: 1450 lbs.

A great numbered Granite son with eye appeal who is out of the good Roxie cow line and gained 5 lbs a day.

Pen 301



LMG Miss Dynette 77010 grandam to Lot 91

90  **LMG GILLS TRENDING 618 1217**
5/26/21 4571005

STRA TRENDING 618
3556536

BIEBER ROLLIN DEEP Y118
HRR COLLEEN 429

LMG MISS JACKIE 4178
1743555

SANDERSON KING ROLLO 22V
LMG MISS JACKIE 5032

| | ProS | HB | GM | CED | BW | WW | YW | Milk | Stay | MB | REA |
|-----------------|------|----|----|-----|-----|----|----|------|------|------|------|
| EPD | 80 | 57 | 23 | 9 | 0.2 | 50 | 81 | 17 | 17 | 0.39 | 0.14 |
| PCTL (%) | 70 | 50 | 95 | 90 | 85 | 80 | 80 | 95 | 25 | 55 | 45 |

Dam's MPPA: 104

BW: 88 lbs.

ADG: 4 lbs. 45 Day Test Sept. 7 - Oct. 19

WW: 941 lbs.

Projected Sale Day Weight: 1367 lbs.

This guy has a huge weaning weight, sired by Trending, and out of the good Jackie cow line!

Pen 301

91  **LMG GILLS MERLIN 949G 1293**
4/26/21 4571135

WSM MERLIN 949G
4145216

WFL MERLIN 018A
WASEM ZINA 907W

LMG MISS 7268
3899233

4MC OPTIMISM 482
LMG MISS DYNETTE 77010

| | ProS | HB | GM | CED | BW | WW | YW | Milk | Stay | MB | REA |
|-----------------|------|----|----|-----|------|----|----|------|------|------|------|
| EPD | 71 | 55 | 17 | 11 | -1.4 | 65 | 98 | 29 | 15 | 0.27 | 0.21 |
| PCTL (%) | 85 | 55 | 95 | 70 | 60 | 30 | 40 | 15 | 50 | 80 | 30 |

Dam's MPPA: 105

BW: 74 lbs.

ADG: 3.1 lbs. 45 Day Test Sept. 7 - Oct. 19

WW: 727 lbs.

Projected Sale Day Weight: 1243 lbs.

Lot 91 is from the great Dynette cow line. The breed needs more Dynettes!

Pen 301

92 **GILL** **LMG GILLS OPTIMISM 482 1313**
5/5/21 **4571169**

4MC OPTIMISM 482 LSF OPTIMISM 1107Y
 1725031 PIE MS D C CRICKET 0284

LMG MISS MARIE 4075 LMG GILLS INDEED 1603
 1743457 LMG MISS MARIE 7001

| | ProS | HB | GM | CED | BW | WW | YW | Milk | Stay | MB | REA |
|-----------------|------|----|----|-----|------|----|----|------|------|------|-----|
| EPD | 132 | 95 | 37 | 11 | -1.1 | 63 | 96 | 24 | 20 | 0.39 | 0.1 |
| PCTL (%) | 5 | 2 | 85 | 70 | 65 | 40 | 45 | 60 | 4 | 55 | 50 |

Dam's MPPA: 102
BW: 78 lbs.
WW: 836 lbs.
ADG: 4.3 lbs. 45 Day Test Sept. 7 - Oct. 19
Projected Sale Day Weight: 1360 lbs.

A good low birth weight Optimism son.
Pen 301

93 **GILL** **LMG GILLS DIESEL 8413 1234**
5/7/21 **4571035**

LMG GILLS DIESEL 8413 LMG GILLS VIN DIESEL 4533
 4097858 LMG MISS MTX 3272

LMG MISS LASS 9718 4MC PROSPECT 469
 4283389 LMG MISS LASS 2542

| | ProS | HB | GM | CED | BW | WW | YW | Milk | Stay | MB | REA |
|-----------------|------|----|----|-----|-----|----|-----|------|------|------|------|
| EPD | 80 | 56 | 24 | 9 | 0.4 | 67 | 109 | 21 | 17 | 0.28 | 0.14 |
| PCTL (%) | 70 | 50 | 95 | 90 | 90 | 25 | 25 | 85 | 25 | 80 | 50 |

Dam's MPPA: 100
BW: 82 lbs.
WW: 788 lbs.
ADG: 5 lbs. 45 Day Test Sept. 7 - Oct. 19
Projected Sale Day Weight: 1450 lbs.

Lot 93 is another good Diesel son out of the Lass cow line. You will like the calves here!
Pen 301

94 **GILL** **LMG GILLS BEEF MAKER 1049**
3/20/21 **4541035**

100% RED ANGUS SIRE 100% RED ANGUS SIRE
 100% RED ANGUS COW

LMG MISS 7325 LMG GILLS VIN DIESEL 7611
 3899121 LMG MISS RAMBO 3302

| | ProS | HB | GM | CED | BW | WW | YW | Milk | Stay | MB | REA |
|-----------------|------|----|----|-----|-----|----|----|------|------|------|------|
| EPD | 68 | 31 | 37 | 9 | 0.6 | 56 | 83 | 23 | 10 | 0.22 | 0.31 |
| PCTL (%) | 87 | 90 | 51 | 89 | 90 | 68 | 77 | 72 | 93 | 92 | 16 |

Dam's MPPA: 101
BW: 85 lbs.
WW: 452 lbs.
ADG: 4.3 lbs. 45 Day Test Sept. 7 - Oct. 19
Projected Sale Day Weight: 1370 lbs.

We couldn't figure out who this guy's sire is so he sells without papers. He will work great on your commercial cows. Trust me, the cows won't know the difference!
Pen 301

95 **GILL** **LMG GILLS DIESEL 1245**
4/22/21 **4571055**

LMG GILLS DIESEL 8413 LMG GILLS VIN DIESEL 4533
 4097858 LMG MISS MTX 3272

LMG MISS ROXIE 4111 FLYING W GAME PLAN 189Y
 1743492 LMG MISS ROXIE 0129

| | ProS | HB | GM | CED | BW | WW | YW | Milk | Stay | MB | REA |
|-----------------|------|----|----|-----|------|----|----|------|------|------|------|
| EPD | 72 | 52 | 20 | 9 | -0.5 | 57 | 90 | 21 | 17 | 0.34 | 0.01 |
| PCTL (%) | 80 | 60 | 95 | 90 | 75 | 65 | 65 | 85 | 25 | 65 | 75 |

Dam's MPPA: 97
BW: 70 lbs. **ADG:** 4 lbs. 45 Day Test Sept. 7 - Oct. 19
WW: 627 lbs. **Projected Sale Day Weight:** 1347 lbs.

Take advantage of these great bulls that are out of even better cow lines!
Pen 301



Holden and Hudson Parasailing

GILL RED ANGUS

96 **LMG GILLS STOCKMARKET 9664** 3/1/21 **4571787**

BIEBER CL STOCKMARKET E119
3751659

PIE STOCKMAN 4051
BIEBER CL ADELLE 475C

LMG MISS STEWARDESS 9664
4283281

PIE LEGEND 468
LMG MISS STEWARDESS 1297

| | ProS | HB | GM | CED | BW | WW | YW | Milk | Stay | MB | REA |
|-----------------|------|----|----|-----|------|----|-----|------|------|------|------|
| EPD | 115 | 71 | 44 | 14 | -2.2 | 73 | 119 | 22 | 17 | 0.73 | 0.25 |
| PCTL (%) | 20 | 20 | 70 | 25 | 40 | 10 | 10 | 75 | 25 | 5 | 20 |

Dam's MPPA: 95
BW: 90 lbs.
WW: 673 lbs.
ADG: 1.7 lbs. 45 Day Test Sept. 7 - Oct. 19
Projected Sale Day Weight: 1143 lbs.

A fancy made Stockmarket son.
Pen 301

97 **LMG GILLS TRENDING 618 1368** 4/23/21 **4571267**

STRA TRENDING 618
3556536

BIEBER ROLLIN DEEP Y118
HRR COLLEEN 429

LMG MISS BRANDY 3339
1668271

FEDDES COMANDER Y104
LMG MISS BRANDY 6314

| | ProS | HB | GM | CED | BW | WW | YW | Milk | Stay | MB | REA |
|-----------------|------|----|----|-----|------|----|----|------|------|------|------|
| EPD | 99 | 69 | 30 | 9 | -0.2 | 59 | 97 | 20 | 18 | 0.37 | 0.21 |
| PCTL (%) | 40 | 25 | 90 | 90 | 80 | 55 | 50 | 90 | 15 | 60 | 30 |

Dam's MPPA: 104
BW: 80 lbs.
WW: 854 lbs.
ADG: 3.3 lbs. 45 Day Test Sept. 7 - Oct. 19
Projected Sale Day Weight: 1307 lbs.

854 lbs at weaning, you got to love it!!!
Pen 301



98 **LMG GILLS REDEMPTION 1700** 6/1/21 **4648731**

LMG GILLS REDEMPTION 8320
4098040

CER MR. REDEMPTION 41D
LMG MISS CINNAMON 4201

LMG MISS MINNE 6608
3556397

4MC OPTIMISM 482
LMG MISS MINNIE 3250

| | ProS | HB | GM | CED | BW | WW | YW | Milk | Stay | MB | REA |
|-----------------|------|----|----|-----|------|----|----|------|------|------|-----|
| EPD | 106 | 65 | 41 | 11 | -1.7 | 54 | 91 | 18 | 18 | 0.38 | 0 |
| PCTL (%) | 30 | 30 | 75 | 70 | 50 | 70 | 55 | 95 | 15 | 55 | 80 |

Dam's MPPA: 92
BW: 85 lbs.
WW: 758 lbs.
ADG: 3.3 lbs. 45 Day Test Sept. 7 - Oct. 19
Projected Sale Day Weight: 1257 lbs.

You will like this Redemption son!!!
Pen 301



99 **LMG GILLS FRANCHISE 1638 1250**
 3/30/21 **4571065**

WILLOW FRANCHISE 1638-1853
 4020990

9 MILE FRANCHISE 6305
 WILLOW FIREFLY 1638

LMG MISS LASS 9721
 4283395

PIE LEGEND 468
 LMG MISS 7299

| | ProS | HB | GM | CED | BW | WW | YW | Milk | Stay | MB | REA |
|-----------------|------|----|----|-----|------|----|-----|------|------|------|------|
| EPD | 79 | 54 | 25 | 12 | -1.9 | 68 | 114 | 36 | 14 | 0.35 | 0.23 |
| PCTL (%) | 75 | 55 | 95 | 55 | 50 | 15 | 15 | 1 | 65 | 65 | 35 |

Dam's MPPA: 106
BW: 63 lbs.
WW: 890 lbs.
ADG: 4 lbs. 45 Day Test Sept. 7 - Oct. 19
Projected Sale Day Weight: 1337 lbs.

An excellent Franchise son out of the great Lass cow line. He only had a 63 lbs birth weight and weaned off at nearly 900 lbs!
Pen 301

100 **LMG GILLS PROSPECT 1282**
 5/15/21 **Commercial**

4MC PROSPECT 469
 1725003

LSF PROSPECT 2035Z
 CCR CHEROKEE 340-510

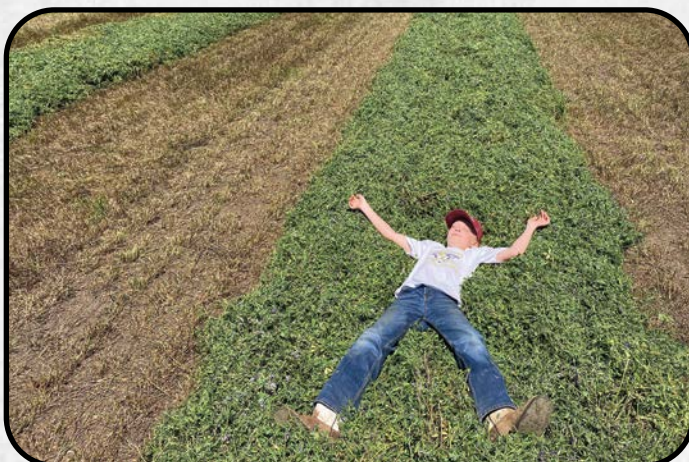
100% RED ANGUS COW

100% RED ANGUS SIRE
100% RED ANGUS COW

| | ProS | HB | GM | CED | BW | WW | YW | Milk | Stay | MB | REA |
|-----------------|------|----|----|-----|----|----|----|------|------|----|-----|
| EPD | | | | | | | | | | | |
| PCTL (%) | | | | | | | | | | | |

BW: 85 lbs.
WW: 790 lbs.
ADG: 4.8 lbs. 45 Day Test Sept. 7 - Oct. 19
Projected Sale Day Weight: 1397 lbs.

A good non-papered Prospect son with great eye appeal.
Pen 303



Gracen laying in an alfalfa windrow

101 **LMG GILLS FRANCHISE 1638 1205**
 3/4/21 **4570985**

WILLOW FRANCHISE 1638-1853
 4020990

9 MILE FRANCHISE 6305
 WILLOW FIREFLY 1638

LMG MISS BLOACKANA 9650
 4283253

WILLOW RINGSIDE 1313-1753
 LMG MISS BLOACKANA 5589

| | ProS | HB | GM | CED | BW | WW | YW | Milk | Stay | MB | REA |
|-----------------|------|----|----|-----|------|----|-----|------|------|------|------|
| EPD | 58 | 34 | 25 | 12 | -1.8 | 64 | 110 | 33 | 14 | 0.35 | 0.09 |
| PCTL (%) | 95 | 85 | 95 | 55 | 50 | 65 | 20 | 2 | 65 | 65 | 55 |

Dam's MPPA: 105
BW: 60 lbs. **ADG:** 4 lbs. 45 Day Test Sept. 7 - Oct. 19
WW: 857 lbs. **Projected Sale Day Weight:** 1447 lbs.

Another light birth weight Franchise son out of the Blockana line.
Pen 303

102  **LMG GILLS REDEMPTION 1289**
6/1/21 **4648721**

LMG GILLS HARD DRIVE 7003
3802960

BIEBER HARD DRIVE Y120
MLF SARA 30Z

LMG MISS LYDIA 5625
3523520

LMG GILLS SUN KING 3503
LMG MISS LYDIA 328Z

| | ProS | HB | GM | CED | BW | WW | YW | Milk | Stay | MB | REA |
|-----------------|------|----|----|-----|------|----|-----|------|------|------|------|
| EPD | 85 | 41 | 44 | 12 | -1.7 | 63 | 101 | 32 | 14 | 0.38 | 0.31 |
| PCTL (%) | 35 | 75 | 35 | 55 | 50 | 40 | 40 | 3 | 65 | 55 | 20 |

Dam's MPPA: 102
BW: 84 lbs.
WW: 756 lbs.
ADG: 4.3 lbs. 45 Day Test Sept. 7 - Oct. 19
Projected Sale Day Weight: 1370 lbs.

These Hard Drive sons are all the same, long bodied, thick and have great eye appeal!
Pen 303

103  **LMG GILLS MERLIN 949G 1353**
4/21/21 **4571241**

WSM MERLIN 949G
4145216

WFL MERLIN 018A
WASEM ZINA 907W

LMG MISS 7265
3899239

LSF SRR FOREMOST 5314C
LMG MISS REMON 5586

| | ProS | HB | GM | CED | BW | WW | YW | Milk | Stay | MB | REA |
|-----------------|------|----|----|-----|------|----|----|------|------|------|------|
| EPD | 74 | 39 | 35 | 9 | -0.8 | 62 | 99 | 28 | 14 | 0.44 | 0.15 |
| PCTL (%) | 80 | 80 | 55 | 90 | 70 | 45 | 45 | 20 | 65 | 40 | 50 |

Dam's MPPA: 99
BW: 78 lbs.
WW: 775 lbs.
ADG: 5.7 lbs. 45 Day Test Sept. 7 - Oct. 19
Projected Sale Day Weight: 1550 lbs.

Lot 103 is another light birth weight Merlin son who knows how to get it done!
Pen 303

104  **LMG GILLS TRENDING 618 1316**
6/15/21 **4571175**

STRA TRENDING 618
3556536

BIEBER ROLLIN DEEP Y118
HRR COLLEEN 429

LMG MISS ROXIE 8833
4097466

4MC PROSPECT 469
LMG MISS ROXIE 4199

| | ProS | HB | GM | CED | BW | WW | YW | Milk | Stay | MB | REA |
|-----------------|------|----|----|-----|-----|----|----|------|------|------|------|
| EPD | 105 | 74 | 31 | 9 | 0.1 | 62 | 99 | 17 | 18 | 0.42 | 0.21 |
| PCTL (%) | 30 | 15 | 65 | 90 | 80 | 45 | 45 | 95 | 15 | 45 | 35 |

Dam's MPPA: 100
BW: 82 lbs.
WW: 883 lbs.
ADG: 3.8 lbs. 45 Day Test Sept. 7 - Oct. 19
Projected Sale Day Weight: 1273 lbs.

Trending by Roxie, a great mix!
Pen 303

105  **LMG GILL HARD DRIVE 1216**
5/17/21 **4571003**

LMG GILLS HARD DRIVE 7003
3802960

BIEBER HARD DRIVE Y120
MLF SARA 30Z

LMG MISS LASS 6625
3556415

LSF HERDBUILDER 1058Y
LMG MISS LASS 4117

| | ProS | HB | GM | CED | BW | WW | YW | Milk | Stay | MB | REA |
|-----------------|------|----|----|-----|------|----|-----|------|------|------|------|
| EPD | 108 | 55 | 53 | 13 | -2.1 | 63 | 101 | 31 | 16 | 0.48 | 0.31 |
| PCTL (%) | 25 | 50 | 20 | 40 | 45 | 40 | 40 | 10 | 45 | 35 | 20 |

Dam's MPPA: 95
BW: 78 lbs. **ADG:** 3.8 lbs. 45 Day Test Sept. 7 - Oct. 19
WW: 840 lbs. **Projected Sale Day Weight:** 1273 lbs.

Hard Drive by Lass. Combining the two, I see long bodied, deep made cows in your future.

Pen 303



Brent and his kids carving pumpkins.

106



LMG GILLS OPTIMISM 482 1318

5/20/21

4571179

4MC OPTIMISM 482
1725031

LSF OPTIMISM 1107Y
PIE MS D C CRICKET 0284

LMG MISS DYNETTE 3232
1668017

LMG GILLS WIDE SPREAD 0904
LMG MISS DYNETTE 6307

| | ProS | HB | GM | CED | BW | WW | YW | Milk | Stay | MB | REA |
|----------|------|----|----|-----|------|----|----|------|------|-----|------|
| EPD | 112 | 83 | 28 | 12 | -0.9 | 59 | 91 | 22 | 19 | 0.3 | 0.09 |
| PCTL (%) | 20 | 10 | 70 | 55 | 70 | 55 | 60 | 75 | 10 | 80 | 65 |

Dam's MPPA: 98

BW: 84 lbs.

WW: 844 lbs.

ADG: 4.5 lbs. 45 Day Test Sept. 7 - Oct. 19

Projected Sale Day Weight: 1293 lbs.

Optimism by Dynette. This is a recipe to make some awesome cows!

Pen 303

107



LMG GILLS TRENDING 618 1340

5/29/21

4571215

STRA TRENDING 618
3556536

BIEBER ROLLIN DEEP Y118
HRR COLLEEN 429

LMG MISS MTX 8774
4097592

HBR LINEDRIVE 663
LMG MISS MTX 1358

| | ProS | HB | GM | CED | BW | WW | YW | Milk | Stay | MB | REA |
|----------|------|----|----|-----|-----|----|----|------|------|------|------|
| EPD | 97 | 69 | 28 | 9 | 0.6 | 60 | 94 | 16 | 18 | 0.44 | 0.22 |
| PCTL (%) | 45 | 25 | 70 | 90 | 90 | 50 | 55 | 95 | 15 | 40 | 35 |

Dam's MPPA: 98

BW: 86 lbs.

ADG: 5 lbs. 45 Day Test Sept. 7 - Oct. 19

WW: 738 lbs.

Projected Sale Day Weight: 1380 lbs.

Another top maternal line here. Take a look at the photo of this guy's grandam. She has the body we love to see here at Gill Red Angus!

Pen 303



Lot 107's granddam.

108



LMG GILLS COOPERSTOWN 1321

5/12/21

4571185

RLC COOPERSTOWN 131F
3976636

FLYING W HEADLINE 213B
RLC SKYLAR 206D

LMG MISS LYDIA 6590
3556380

KUHNS COUNTOUR B026
LMG MISS LYDIA 00011

| | ProS | HB | GM | CED | BW | WW | YW | Milk | Stay | MB | REA |
|----------|------|----|----|-----|-----|----|-----|------|------|------|------|
| EPD | 82 | 67 | 16 | 10 | 0.6 | 68 | 103 | 23 | 19 | 0.25 | 0.22 |
| PCTL (%) | 70 | 25 | 90 | 80 | 90 | 25 | 35 | 70 | 10 | 85 | 35 |

Dam's MPPA: 105

BW: 86 lbs.

WW: 889 lbs.

ADG: 4 lbs. 45 Day Test Sept. 7 - Oct. 19

Projected Sale Day Weight: 1267 lbs.

Another good Cooperstown son with great weights!

Pen 303

109



LMG GILLS OPTIMISM 482 1358

6/25/21

4571251

4MC OPTIMISM 482
1725031

LSF OPTIMISM 1107Y
PIE MS D C CRICKET 0284

LMG MISS DYNETTE 5513
3523392

C-T GRAND STATEMENT 1025
LMG MISS DYNETTE 0003

| | ProS | HB | GM | CED | BW | WW | YW | Milk | Stay | MB | REA |
|----------|------|----|----|-----|-----|----|-----|------|------|------|------|
| EPD | 127 | 94 | 33 | 9 | 0.2 | 67 | 103 | 26 | 20 | 0.35 | 0.06 |
| PCTL (%) | 10 | 2 | 60 | 90 | 85 | 25 | 35 | 40 | 3 | 70 | 60 |

Dam's MPPA: 105

BW: 86 lbs.

WW: 888 lbs.

ADG: 3.1 lbs. 45 Day Test Sept. 7 - Oct. 19

Projected Sale Day Weight: 1243 lbs.

This one goes back to both the Dynette and the Grand Statement line. Lots of natural easy fleshing going on here!

Pen 303

GILL RED ANGUS

110



LMG GILLS DIESEL 8413 1308

4/22/21

4571161

LMG GILLS DIESEL 8413
4097858

LMG GILLS VIN DIESEL 4533
LMG MISS MTX 3272

LMG MISS MTX 9708
4283369

PIE LEGEND 468
LMG MISS MTX 3272

| | ProS | HB | GM | CED | BW | WW | YW | Milk | Stay | MB | REA |
|----------|------|----|----|-----|------|----|-----|------|------|------|------|
| EPD | 80 | 56 | 24 | 10 | -0.5 | 65 | 107 | 27 | 16 | 0.34 | 0.13 |
| PCTL (%) | 70 | 50 | 80 | 80 | 75 | 35 | 30 | 30 | 40 | 65 | 50 |

Dam's MPPA: 96

BW: 74 lbs.

WW: 716 lbs.

ADG: 3.1 lbs. 45 Day Test Sept. 7 - Oct. 19

Projected Sale Day Weight: 1223 lbs.

Man there are some really good Diesel sons selling here out of some great cow lines. Take advantage of it!

Pen 303

111



LMG GILLS HARD DRIVE 1202

5/22/21

4570979

LMG GILLS HARD DRIVE 7003
3802960

BIEBER HARD DRIVE Y120
MLF SARA 30Z

LMG MISS SUSETTE 3284
1668266

LMG GILLS WIDE SPREAD 0904
LMG MISS SUSETT 6079

| | ProS | HB | GM | CED | BW | WW | YW | Milk | Stay | MB | REA |
|----------|------|----|----|-----|------|----|-----|------|------|------|-----|
| EPD | 92 | 54 | 39 | 13 | -1.1 | 68 | 109 | 23 | 17 | 0.37 | 0.3 |
| PCTL (%) | 55 | 55 | 50 | 40 | 65 | 25 | 25 | 70 | 25 | 60 | 20 |

Dam's MPPA: 97

BW: 86 lbs.

WW: 784 lbs.

ADG: 3.6 lbs. 45 Day Test Sept. 7 - Oct. 19

Projected Sale Day Weight: 1340 lbs.

Lot 111 is a well made Hard Drive son with a lot of eye appeal!

Pen 303

112



LMG GILLS LINE DRIVE 1347

5/1/21

4571229

HBR LINEDRIVE 663
3557097

LSF SRR HEADLINER 3105A
HBR MOOSE 829-0144

LMG MISS MINNIE 8754
4097630

LMG GILLS HARD DRIVE 5006
LMG MISS MINNE 6608

| | ProS | HB | GM | CED | BW | WW | YW | Milk | Stay | MB | REA |
|----------|------|----|----|-----|----|----|----|------|------|------|------|
| EPD | 117 | 72 | 45 | 12 | -1 | 58 | 89 | 14 | 16 | 0.51 | 0.16 |
| PCTL (%) | 15 | 20 | 35 | 55 | 65 | 60 | 65 | 95 | 35 | 25 | 40 |

Dam's MPPA: 94

BW: 82 lbs.

ADG: 3.6 lbs. 45 Day Test Sept. 7 - Oct. 19

WW: 669 lbs.

Projected Sale Day Weight: 1220 lbs.

One of the only Line Drive sons in the sale. Come check him out, you will like him!

Pen 303



Holden at a Tiki Bar on our Florida vacation.



Holden and Hudson on Moe and Red heading out to move pairs.



Maternal grandsire of Lot 113 - LMG Gills Indeed 1603

113  **LMG GILLS MERLIN 949G 1326**
3/11/21 4571193

WSM MERLIN 949G
4145216

WFL MERLIN 018A
WASEM ZINA 907W

LMG MISS RITA 5593
3523397

LMG GILLS INDEED 1603
LMG MISS RITA 0416

| | ProS | HB | GM | CED | BW | WW | YW | Milk | Stay | MB | REA |
|----------|------|----|----|-----|------|----|----|------|------|------|------|
| EPD | 56 | 44 | 12 | 9 | -0.5 | 66 | 97 | 23 | 14 | 0.29 | 0.16 |
| PCTL (%) | 95 | 75 | 95 | 90 | 75 | 30 | 50 | 70 | 65 | 80 | 40 |

Dam's MPPA: 97

BW: 86 lbs.

ADG: 4 lbs. 45 Day Test Sept. 7 - Oct. 19

WW: 791 lbs.

Projected Sale Day Weight: 1357 lbs.

An exciting pedigree as his dam goes back to Gills Indeed, a son of RED Towaw Indeed and LMG Miss Dynette 3041. You don't get any more maternal than that!
Pen 303

114  **LMG GILLS COOPERSTOWN 1204**
5/8/21 4570983

RLC COOPERSTOWN 131F
3976636

FLYING W HEADLINE 213B
RLC SKYLAR 206D

LMG MISS DYNETTE 8866
4097408

STRA TRENDING 618
LMG MISS DYNETTE 2596

| | ProS | HB | GM | CED | BW | WW | YW | Milk | Stay | MB | REA |
|----------|------|----|----|-----|----|----|----|------|------|------|------|
| EPD | 81 | 68 | 13 | 11 | 0 | 62 | 95 | 17 | 19 | 0.25 | 0.15 |
| PCTL (%) | 70 | 25 | 90 | 70 | 80 | 45 | 50 | 95 | 10 | 85 | 40 |

Dam's MPPA: 86

BW: 88 lbs.

ADG: 3.3 lbs. 45 Day Test Sept. 7 - Oct. 19

WW: 711 lbs.

Projected Sale Day Weight: 1277 lbs.

Another bull out of the Dynette family. No wonder these guys are good.
Pen 303



Making earlage.



Lot 115

115  **LMG GILLS TRENDING 618 1302**
6/20/21 4571151

STRA TRENDING 618
3556536

BIEBER ROLLIN DEEP Y118
HRR COLLEEN 429

LMG MISS VERDALE 5575
3523436

C-T GRAND STATEMENT 1025
LUCHT VERDALE 160

| | ProS | HB | GM | CED | BW | WW | YW | Milk | Stay | MB | REA |
|----------|------|----|----|-----|----|----|----|------|------|------|------|
| EPD | 97 | 65 | 32 | 11 | -2 | 55 | 91 | 19 | 17 | 0.47 | 0.13 |
| PCTL (%) | 45 | 30 | 65 | 70 | 45 | 65 | 60 | 95 | 25 | 35 | 45 |

Dam's MPPA: 100

BW: 82 lbs.

ADG: 3.1 lbs. 45 Day Test Sept. 7 - Oct. 19

WW: 952 lbs.

Projected Sale Day Weight: 1233 lbs.

Take a look at his weights!!!

Pen 304

GILL RED ANGUS

116 **LMG GILLS STOCKMARKET 7341** 4/21/21 4571679

BIEBER CL STOCKMARKET E119
3751659

PIE STOCKMAN 4051
BIEBER CL ADELLE 475C

LMG MISS 7341
3899091

LMG GILLS STATEMENT 2066
C-T MATTIE 0947

| | ProS | HB | GM | CED | BW | WW | YW | Milk | Stay | MB | REA |
|-----------------|------|----|----|-----|------|----|-----|------|------|------|------|
| EPD | 110 | 62 | 48 | 13 | -3.7 | 64 | 105 | 21 | 17 | 0.79 | 0.11 |
| PCTL (%) | 25 | 40 | 30 | 40 | 20 | 35 | 60 | 85 | 25 | 3 | 55 |

Dam's MPPA: 98
BW: 75 lbs.
WW: 826 lbs.
ADG: 5.5 lbs. 45 Day Test Sept. 7 - Oct. 19
Projected Sale Day Weight: 1527 lbs.

Grand Statement by Stockmarket - well known and heavily used bulls throughout the industry.
Pen 304

117 **LMG GILLS MERLIN 949G 1266** 6/15/21 4571093

WSM MERLIN 949G
4145216

WFL MERLIN 018A
WASEM ZINA 907W

LMG MISS MARGO 3334
1668233

LMG GILLS VIN DIESEL 7611
LMG MARGO 3022

| | ProS | HB | GM | CED | BW | WW | YW | Milk | Stay | MB | REA |
|-----------------|------|----|----|-----|------|----|----|------|------|------|------|
| EPD | 47 | 43 | 4 | 9 | -0.1 | 63 | 93 | 27 | 15 | 0.23 | 0.18 |
| PCTL (%) | 95 | 75 | 95 | 90 | | | | 35 | 50 | 90 | 40 |

Dam's MPPA: 103
BW: 82 lbs.
WW: 1005 lbs.
ADG: 3.8 lbs. 45 Day Test Sept. 7 - Oct. 19
Projected Sale Day Weight: 1283 lbs.

Wow, look at this guy's weaning weight!!!
Pen 304

118 **LMG GILLS OPTIMISM 482 1280** 5/29/21 4571117

4MC OPTIMISM 482
1725031

LSF OPTIMISM 1107Y
PIE MS D C CRICKET 0284

LMG MISS STORMY 4141
1743521

FLYING W GAME PLAN 189Y
LMG MISS STORMY 7074

| | ProS | HB | GM | CED | BW | WW | YW | Milk | Stay | MB | REA |
|-----------------|------|----|----|-----|------|----|----|------|------|------|------|
| EPD | 127 | 96 | 31 | 11 | -1.4 | 60 | 92 | 25 | 20 | 0.34 | 0.06 |
| PCTL (%) | 10 | 2 | 65 | 70 | 60 | 50 | 60 | 50 | 4 | 65 | 60 |

Dam's MPPA: 102
BW: 84 lbs.
WW: 913 lbs.
ADG: 3.3 lbs. 45 Day Test Sept. 7 - Oct. 19
Projected Sale Day Weight: 1297 lbs.

We are offering several of these good Optimism calves. Come get ya some!
Pen 304

119 **LMG GILLS 3002** 6/30/21 Commercial

4MC OPTIMISM 482
1725031

LSF OPTIMISM 1107Y
PIE MS D C CRICKET 0284

100% RED ANGUS COW

100% RED ANGUS SIRE
100% RED ANGUS COW

| | ProS | HB | GM | CED | BW | WW | YW | Milk | Stay | MB | REA |
|-----------------|------|----|----|-----|----|----|----|------|------|----|-----|
| EPD | | | | | | | | | | | |
| PCTL (%) | | | | | | | | | | | |

Dam's MPPA:

BW: lbs. **ADG:** 4 lbs. 45 Day Test Sept. 7 - Oct. 19
WW: lbs. **Projected Sale Day Weight:** 1187 lbs.

A good non papered Optimism son great eye appeal.
Pen 304



Bryan's Family

120  **LMG GILLS SPARTACUS 1211**
5/15/21 **4661595**

BIEBER SPARTACUS F129
3958047

BIEBER SPARTACUS A193
BIEBER ENCHANTRESS 399D

LMG MISS PALASS 9644
4283243

NON-REGISTERED SIRE
LUCHT PALASS 196

| | ProS | HB | GM | CED | BW | WW | YW | Milk | Stay | MB | REA |
|----------|------|----|----|-----|------|----|-----|------|------|------|------|
| EPD | 91 | 47 | 44 | 11 | -1.3 | 74 | 120 | 22 | 13 | 0.36 | 0.18 |
| PCTL (%) | 53 | 69 | 35 | 78 | 78 | 9 | 10 | 76 | 81 | 62 | 39 |

BW: 85 lbs.
WW: 815 lbs.
ADG: 2.9 lbs. 45 Day Test Sept. 7 - Oct. 19
Projected Sale Day Weight: 1190 lbs.

You will love the looks of this Spartacus son! His dam is registered at Category III. She is a great cow, but you can't get the Red Angus yellow tag out of a Cat. III animal.

Pen 304

121  **LMG GILLS HARD DRIVE 1213**
6/1/21 **4570997**

LMG GILLS HARD DRIVE 7003
3802960

BIEBER HARD DRIVE Y120
MLF SARA 30Z

LMG MISS DYNETTE 6605
3556394

LMG GILLS VIN DIESEL 7611
LMG MISS DYNETTE 1327

| | ProS | HB | GM | CED | BW | WW | YW | Milk | Stay | MB | REA |
|----------|------|----|----|-----|------|----|-----|------|------|------|------|
| EPD | 81 | 41 | 40 | 12 | -1.4 | 70 | 114 | 28 | 16 | 0.34 | 0.39 |
| PCTL (%) | 70 | 75 | 45 | 55 | 50 | 15 | 15 | 20 | 35 | 65 | 10 |

Dam's MPPA: 108
BW: 85 lbs.
WW: 920 lbs.
ADG: 3.1 lbs. 45 Day Test Sept. 7 - Oct. 19
Projected Sale Day Weight: 1233 lbs.

Come get a load of these great Hard Drive sons. You won't regret it!
Pen 304

122  **LMG GILLS SPARTACUS 1328**
5/1/21 **4571195**

BIEBER SPARTACUS F129
3958047

BIEBER SPARTACUS A193
BIEBER ENCHANTRESS 399D

LUCHT FOXXY ROXY 108
1495747

LUCHT DIAMOND BACK 894
OHRR FOXXY ROXY 21L

| | ProS | HB | GM | CED | BW | WW | YW | Milk | Stay | MB | REA |
|----------|------|----|----|-----|------|----|----|------|------|------|-------|
| EPD | 75 | 43 | 33 | 13 | -2.2 | 60 | 98 | 25 | 14 | 0.35 | -0.02 |
| PCTL (%) | 80 | 75 | 60 | 40 | 45 | 50 | 45 | 55 | 65 | 65 | 80 |

Dam's MPPA: 94
BW: 76 lbs.
WW: 635 lbs.
ADG: 4 lbs. 45 Day Test Sept. 7 - Oct. 19
Projected Sale Day Weight: 1327 lbs.

He goes back to Foxy Roxy, a great cow line at from Lucht and OHRR Red Angus!
Pen 304



123  **LMG GILLS SPARTACUS 1265**
5/12/21 **4571091**

BIEBER SPARTACUS F129
3958047

BIEBER SPARTACUS A193
BIEBER ENCHANTRESS 399D

LMG MISS 7249
3899269

LMG GILLS STATEMENT 2066
LUCHT RAINBOW 168

| | ProS | HB | GM | CED | BW | WW | YW | Milk | Stay | MB | REA |
|----------|------|----|----|-----|------|----|-----|------|------|------|------|
| EPD | 72 | 38 | 34 | 11 | -1.4 | 72 | 119 | 29 | 13 | 0.38 | 0.04 |
| PCTL (%) | 85 | 80 | 55 | 70 | 55 | 10 | 10 | 15 | 75 | 55 | 65 |

Dam's MPPA: 102
BW: 78 lbs.
WW: 799 lbs.
ADG: 4 lbs. 45 Day Test Sept. 7 - Oct. 19
Projected Sale Day Weight: 1287 lbs.

Spartacus by Statement, and near perfect weights!
Pen 304

124  **LMG GILLS OPTIMISM 482 1342**
5/5/21 4571219

4MC OPTIMISM 482
1725031

LSF OPTIMISM 1107Y
PIE MS D C CRICKET 0284

LMG MISS STORMY 5577
3523396

LMG GILLS INDEED 1603
LMG MISS STORMY 0414

| | ProS | HB | GM | CED | BW | WW | YW | Milk | Stay | MB | REA |
|-----------------|------|----|----|-----|------|----|----|------|------|------|------|
| EPD | 125 | 93 | 32 | 11 | -1.5 | 58 | 87 | 25 | 20 | 0.36 | 0.05 |
| PCTL (%) | 10 | 2 | 65 | 70 | 55 | 60 | 70 | 50 | 4 | 60 | 60 |

Dam's MPPA: 99
BW: 74 lbs.
WW: 755 lbs.
ADG: 3.1 lbs. 45 Day Test Sept. 7 - Oct. 19
Projected Sale Day Weight: 1133 lbs.

Optimism by Indeed, great weights. Maternal and calving ease all in one.
Pen 304



125  **LMG GILLS GRANITE 610G 1333**
4/26/21 4571203

FRITZ GRANITE 610G
4169552

FRITZ GOLDEN OSCAR 8006
FRITZ EMILY 310E

LMG MISS 7240
3899285

4MC PROSPECT 469
LMG MISS FREYJA 3275

| | ProS | HB | GM | CED | BW | WW | YW | Milk | Stay | MB | REA |
|-----------------|------|----|----|-----|-----|----|-----|------|------|------|------|
| EPD | 124 | 77 | 47 | 11 | 0.7 | 77 | 125 | 28 | 20 | 0.51 | 0.16 |
| PCTL (%) | 10 | 10 | 30 | 70 | 90 | 5 | 5 | 20 | 4 | 30 | 40 |

Dam's MPPA: 112
BW: 60 lbs. **ADG:** 5 lbs. 45 Day Test Sept. 7 - Oct. 19
WW: 733 lbs. **Projected Sale Day Weight:** 1450 lbs.
Not many bulls left! You might want to grab this good Granite son!
Pen 304

126  **LMG GILLS LAKOTA 9227 1231**
5/23/21 4571029

BAR M LAKOTA 9227
4173410

RREDS SENECA 731C
BAR M MS HORIZON 5081

LMG MISS DIANNE 8709
4097716

LMG GILLS SUN KING 6700
LMG MISS DIANNE 6454

| | ProS | HB | GM | CED | BW | WW | YW | Milk | Stay | MB | REA |
|-----------------|------|----|----|-----|------|----|-----|------|------|------|------|
| EPD | 85 | 53 | 32 | 11 | -0.7 | 63 | 100 | 26 | 16 | 0.36 | 0.17 |
| PCTL (%) | 65 | 55 | 65 | 70 | 70 | 40 | 40 | 40 | 35 | 60 | 35 |

Dam's MPPA: 99
BW: 76 lbs. **ADG:** 3.6 lbs. 45 Day Test Sept. 7 - Oct. 19
WW: 764 lbs. **Projected Sale Day Weight:** 1230 lbs.

We are getting towards the end, and the quality hasn't dropped off. You need to come take a look for yourself. This is a great set of bulls!

Pen 304



Cayne



Kendyl at the lake.



127 **GILL** **LMG GILLS VIN DIESEL 1284**
5/5/21 **4571121**

LMG GILLS VIN DIESEL 4533
1743620

LMG GILLS VIN DIESEL 7611
LMG MISS DYNETTE 77012

LMG MISS SUSETTE 6617
3556406

4MC PROSPECT 469
LUCHT MISS SUSETT 151

| | ProS | HB | GM | CED | BW | WW | YW | Milk | Stay | MB | REA |
|-----------------|------|----|----|-----|-----|----|-----|------|------|------|------|
| EPD | 76 | 50 | 25 | 10 | 0.3 | 77 | 123 | 14 | 17 | 0.29 | 0.17 |
| PCTL (%) | 80 | 65 | 75 | 80 | 85 | 5 | 5 | 95 | 25 | 80 | 35 |

Dam's MPPA: 96

BW: 84 lbs.

ADG: 4.5 lbs. 45 Day Test Sept. 7 - Oct. 19

WW: 788 lbs.

Projected Sale Day Weight: 1333 lbs.

This is the last Diesel in the sale. Put one more in your trailer. You won't regret it.

Pen 304

128 **GILL** **LMG GILLS DIESEL 1242**
4/23/21 **4571051**

LMG GILLS DIESEL 8413
4097858

LMG GILLS VIN DIESEL 4533
LMG MISS MTX 3272

LMG MISS ROXIE 9543
4283047

4MC OPTIMISM 482
LMG MISS ROXIE 5633

| | ProS | HB | GM | CED | BW | WW | YW | Milk | Stay | MB | REA |
|-----------------|------|----|----|-----|------|----|----|------|------|------|------|
| EPD | 93 | 64 | 29 | 10 | -0.3 | 62 | 97 | 22 | 18 | 0.36 | 0.06 |
| PCTL (%) | 50 | 30 | 70 | 80 | 75 | 45 | 50 | 80 | 15 | 65 | 65 |

Dam's MPPA: 93

BW: 68 lbs.

WW: 656 lbs.

ADG: 3.6 lbs. 45 Day Test Sept. 7 - Oct. 19

Projected Sale Day Weight: 1210 lbs.

On the top you will find the MTX cow line and on the bottom you will see Roxie. These are 2 of our best cow families, and when they are bred together, great things will happen with this combination.

Pen 304

129 **GILL** **LMG GILLS ALLEGIANCE 1249**
5/30/21 **4571063**

HXC ALLEGIANCE 5502C
3494126

LEACHMAN PLEDGE A282Z
HXC 100Y

LMG MISS MAIDEN
1667978

FEDDES COMANDER Y104
LMG MISS MAIDEN 77011

| | ProS | HB | GM | CED | BW | WW | YW | Milk | Stay | MB | REA |
|-----------------|------|----|----|-----|------|----|-----|------|------|------|------|
| EPD | 119 | 55 | 64 | 11 | -1.2 | 60 | 103 | 23 | 16 | 0.61 | 0.14 |
| PCTL (%) | 15 | 55 | 35 | 70 | 60 | 50 | 35 | 70 | 35 | 15 | 45 |

Dam's MPPA: 94

BW: 88 lbs.

WW: 789 lbs.

ADG: 2.1 lbs. 45 Day Test Sept. 7 - Oct. 19

Projected Sale Day Weight: 1160 lbs.

What a great way to end the sale! This guy could be in the front half of most sales. He will work great for you!

Pen 304



Evelyn smashing a pie on Father Brian



Quayde and Cayne hiking.



Mobridge Livestock is dedicated to the Red Angus breed. We are the only auction barn in the country to offer a solely Red Angus calf sale. In addition, we market more Red Angus and Red Angus cross calves than any other auction barn in the United States.



Sale Barn:

1-800-658-3598 or (605) 845-3622
 PO Box 190 • Mobridge, SD 57601

Owners:

Jason Anderberg: (605) 848-0038 & (605) 845-5440
 Tigh Anderberg: (605) 845-4877 & (605) 845-3584
 Casey Perman: (605) 848-3338 & (605) 762-3305

Fieldmen:

Tom Anderberg: (605) 845-6200 & (605) 845-3702
 John Hoven: (605) 848-3507 & (605) 823-2404
 Cole Mettler: (605) 519-1683

See our sales live and BID online! Go to: www.cattleusa.com

The cattle market large enough to handle all your cattle marketing needs, yet small enough to appreciate it!

Sod. Soil. **SOLD!**sm



Whether farmland, pastureland or hunting land, we will visit about the various options for marketing your property to come up with the best approach to achieve your specific goals.

Contact **Kristen Gill** at **605-848-4502**
TODAY for your free land value estimate.
kristen@glcland.com • www.glcland.com

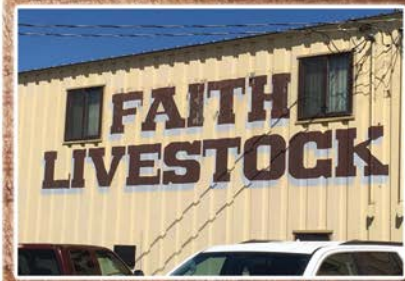


FAITH LIVESTOCK AUCTION

127 N 5th Ave W, Faith, SD 57626 • www.faithlivestock.com

SALES ON MONDAYS

View Consignment Listings at faithlivestock.com



FAITH LIVESTOCK AUCTION
Office 605-967- 2200
Fax 605-967- 2203
FLA@Faithsd.com

OWNERS:
Dace Harper 605-515-1535
Mason Dietterle 605-580-5878

FIELDMEN:
Doug Dietterle 605-580-1362
Max Loughlin 605-645-2583
Troy Wilcox 605-515-0121
Kaden Deal 605-515-4180



"You Buy Our Bulls, We Will Bid on Your Calves"



LMG GILLS SUN KING 3503

01-03-2013

1644890

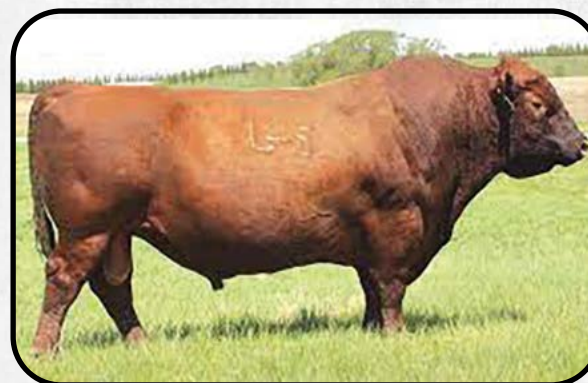
LARSON SUN KING 016
1384618

BECKTON NEBULA P P707
LARSON TAMARA 545-556

VANWYE QUEENETTE 35Y
1472754

FEDDES BIG SKY R9
VAN WYE QUEENETTE 60U

| | ProS | HB | GM | CED | BW | WW | YW | Milk | Stay | MB | REA |
|----------|------|----|----|-----|-----|----|----|------|------|-----|------|
| EPD | 116 | 48 | 68 | 9 | 0.2 | 61 | 97 | 34 | 13 | 0.7 | 0.25 |
| PCTL (%) | 21 | 63 | 10 | 86 | 81 | 53 | 54 | 3 | 74 | 10 | 28 |



LARSON SUN KING 016 SIRE OF LMG GILLS SUN KING 3503



4MC OPTIMISM 482

02-10-2014

1725031

LSF OPTIMISM 1107Y
1445627

BECKTON EPIC R397 K
LSF COUNTESS 925R U8133

PIE MS D C CRICKET 0284
1409967

PIE GET R DONE 684
PIE MS D C CRICKET 7184

| | ProS | HB | GM | CED | BW | WW | YW | Milk | Stay | MB | REA |
|----------|------|-----|----|-----|------|----|----|------|------|-----|------|
| EPD | 164 | 117 | 47 | 12 | -1.7 | 61 | 92 | 25 | 21 | 0.4 | 0.13 |
| PCTL (%) | 2 | 1 | 31 | 57 | 52 | 54 | 64 | 55 | 3 | 52 | 46 |



4MC OPTIMISM 482



LMG GILLS VIN DIESEL 4533

05-24-2014

1743620

LMG GILLS VIN DIESEL 7611
1212237

WR MR. RED DAWG 5335
LMG ROXIE 1080

LMG MISS DYNETTE 77012
1176743

LCC VAQUERO 1412J
LMG DYNETTE 902

| | ProS | HB | GM | CED | BW | WW | YW | Milk | Stay | MB | REA |
|----------|------|----|----|-----|-----|----|-----|------|------|------|------|
| EPD | 46 | 34 | 12 | 10 | 0.2 | 80 | 126 | 16 | 16 | 0.19 | 0.25 |
| PCTL (%) | 93 | 81 | 85 | 81 | 81 | 7 | 10 | 97 | 47 | 89 | 28 |



LMG GILLS VIN DIESEL 4533



4MC PROSPECT 469

02-22-2014

1725003

LSF PROSPECT 2035Z
1547645

LSF NIGHT CALVER 9921W
LSF BLACKBIRD N3080 X0406

CCR CHEROKEE 340-510
1043545

BUF CRK CHEROKEE N009
CCR SHOCKER 460-340

| | ProS | HB | GM | CED | BW | WW | YW | Milk | Stay | MB | REA |
|----------|------|----|----|-----|-----|----|-----|------|------|------|------|
| EPD | 128 | 87 | 41 | 7 | 1.6 | 84 | 136 | 16 | 21 | 0.34 | 0.21 |
| PCTL (%) | 11 | 8 | 40 | 96 | 93 | 4 | 5 | 97 | 4 | 64 | 33 |



HBR LINEDRIVE 663

02-25-2016

3557097

LSF SRR HEADLINER 3105A
1623897

LSF SAGA 1040Y
LSF CRYSTAL R5145 Y1011

HBR MOOSE 829-0144
1405096

MFIN FINCHBULL R115
LDCC MOOSE 829

| | ProS | HB | GM | CED | BW | WW | YW | Milk | Stay | MB | REA |
|----------|------|-----|----|-----|-----|----|----|------|------|------|------|
| EPD | 138 | 103 | 35 | 12 | 0.2 | 65 | 95 | 16 | 19 | 0.48 | 0.17 |
| PCTL (%) | 7 | 2 | 51 | 53 | 81 | 41 | 58 | 96 | 12 | 36 | 39 |



STRA TRENDING 618

02-10-2016

3556536

BIEBER ROLLIN DEEP Y118 1436844
 BIEBER ROOSEVELT W384
 BIEBER TILLY 399W

HRR COLLEEN 429 958998
 GLACIER LOGAN 210
 HOLDEN COLLEEN 602A

| | ProS | HB | GM | CED | BW | WW | YW | Milk | Stay | MB | REA |
|----------|------|----|----|-----|-----|----|----|------|------|------|------|
| EPD | 96 | 70 | 26 | 8 | 0.5 | 57 | 92 | 13 | 18 | 0.49 | 0.27 |
| PCTL (%) | 42 | 25 | 65 | 92 | 85 | 67 | 64 | 99 | 18 | 34 | 25 |



STRA TRENDING 618



BIEBER SPARTACUS F129

01-14-2018

3958047

BIEBER SPARTACUS A193 1617230
 BIEBER ROUSE SAMURAI X22
 BIEBER TILLY 233U

BIEBER ENCHANTRESS 399D 3536793
 LOOSLI RIGHT ON 423
 BIEBER ENCHANTRESS 225A

| | ProS | HB | GM | CED | BW | WW | YW | Milk | Stay | MB | REA |
|----------|------|----|----|-----|------|----|-----|------|------|-----|------|
| EPD | 66 | 28 | 38 | 14 | -3.4 | 80 | 133 | 30 | 10 | 0.4 | 0.06 |
| PCTL (%) | 80 | 86 | 46 | 34 | 24 | 7 | 6 | 16 | 92 | 52 | 60 |



BIEBER SPARTACUS F129



RLC COOPERSTOWN 131F

04-07-2018

3976636

FLYING W HEADLINE 213B 1708346
 SR HEADWACK 235
 SOUTHLAND ANDREA 7Z

RLC SKYLAR 206D 3539472
 RCRA RAZOR EDGE 15Z
 FLYING W SKYLAR 136X

| | ProS | HB | GM | CED | BW | WW | YW | Milk | Stay | MB | REA |
|----------|------|----|----|-----|-----|----|-----|------|------|------|------|
| EPD | 87 | 84 | 4 | 12 | 0.3 | 68 | 100 | 27 | 21 | 0.13 | 0.25 |
| PCTL (%) | 55 | 10 | 93 | 63 | 82 | 29 | 48 | 31 | 4 | 94 | 28 |



RLC COOPERSTOWN 131F



WILLOW RINGSIDE 1313-1753

04-08-2017

3806584

HXC DECLARATION 5504C 3494198
 LEACHMAN PLEDGE A282Z
 HXC190Y

WILLOW JACKIE 1313 1643715
 PIE OSCAR 118
 WILLOW JACKIE 033

| | ProS | HB | GM | CED | BW | WW | YW | Milk | Stay | MB | REA |
|----------|------|----|----|-----|------|----|-----|------|------|------|------|
| EPD | 61 | 4 | 57 | 10 | -1.4 | 67 | 121 | 23 | 12 | 0.45 | 0.05 |
| PCTL (%) | 84 | 97 | 18 | 77 | 57 | 34 | 14 | 68 | 84 | 42 | 62 |



WILLOW FRANCHISE 1638-1853

04-04-2018

4020990

9 MILE FRANCHISE 6305 3555188
 SPUR FRANCHISE OF GARTON
 C-BAR ABIGRACE Y11

WILLOW FIREFLY 1638 3579039
 PIE LEGEND 468
 WILLOW FIREFLY 975

| | ProS | HB | GM | CED | BW | WW | YW | Milk | Stay | MB | REA |
|----------|------|----|----|-----|------|----|-----|------|------|------|------|
| EPD | 59 | 39 | 20 | 13 | -1.6 | 69 | 119 | 34 | 12 | 0.36 | 0.21 |
| PCTL (%) | 86 | 75 | 75 | 52 | 53 | 26 | 16 | 3 | 80 | 60 | 33 |



WSM MERLIN 949G

03-09-2019

4145216

WFL MERLIN 018A
1628086

LJC MERLIN T179
WFL COMMITMENT 042Y

WASEM ZINA 907W
1362404

COLEY'S MOJITO 503R
MESSMER ZINA 211N

| | ProS | HB | GM | CED | BW | WW | YW | Milk | Stay | MB | REA |
|----------|------|----|----|-----|------|----|-----|------|------|------|-----|
| EPD | 36 | 28 | 8 | 10 | -1.2 | 66 | 100 | 30 | 12 | 0.23 | 0.3 |
| PCTL (%) | 96 | 87 | 90 | 82 | 60 | 35 | 49 | 13 | 84 | 83 | 22 |



WFL MERLIN 018A - SIRE OF WSM MERLIN 949G



GILL DOMAIN 8041

09-08-2018

4150812

3SCC DOMAIN A163
1619642

BECKTON DOMINOR T122 Z1
3SCC EUCLA X723

RHODES 298Y NIKKIE 660
3560067

5L INDEPENDENCE 560-298Y
RHODES 911U NIKKIE 153A

| | ProS | HB | GM | CED | BW | WW | YW | Milk | Stay | MB | REA |
|----------|------|----|----|-----|------|----|-----|------|------|-----|------|
| EPD | 78 | 33 | 44 | 13 | -1.9 | 62 | 102 | 23 | 13 | 0.5 | 0.04 |
| PCTL (%) | 67 | 82 | 35 | 44 | 48 | 50 | 44 | 70 | 73 | 33 | 64 |



3SCC DOMAIN A163 - SIRE OF GILL DOMAIN 8041



LMG GILLS STATEMENT 8468

05-30-2018

4097756

LMG GILLS STATEMENT 4591
1743671

C-T GRAND STATEMENT 1025
ALMS 0139W

LMG MISS SARA 9010
1325616

VGW RATTLER 908
LMG SARA 015

| | ProS | HB | GM | CED | BW | WW | YW | Milk | Stay | MB | REA |
|----------|------|----|----|-----|----|----|----|------|------|------|------|
| EPD | 98 | 69 | 29 | 11 | -1 | 57 | 92 | 18 | 17 | 0.35 | 0.02 |
| PCTL (%) | 39 | 27 | 60 | 71 | 63 | 66 | 64 | 93 | 29 | 62 | 67 |



LMG GILLS DIESEL 8413

05-06-2018

4097858

LMG GILLS VIN DIESEL 4533
1743620

LMG GILLS VIN DIESEL 7611
LMG MISS DYNETTE 77012

LMG MISS MTX 3272
1668258

C-T GRAND STATEMENT 1025
LMG MISS MTX 6010

| | ProS | HB | GM | CED | BW | WW | YW | Milk | Stay | MB | REA |
|----------|------|----|----|-----|------|----|-----|------|------|------|------|
| EPD | 63 | 40 | 23 | 9 | -0.2 | 63 | 102 | 24 | 16 | 0.33 | 0.08 |
| PCTL (%) | 82 | 74 | 70 | 86 | 76 | 46 | 44 | 64 | 46 | 66 | 56 |



LMG GILLS PROSPECT 8428

05-15-2018

4097830

4MC PROSPECT 469
1725003

LSF PROSPECT 2035Z
CCR CHEROKEE 340-510

LMG MISS LYDIA 0116
1414879

LMG MISS LYDIA 4102

| | ProS | HB | GM | CED | BW | WW | YW | Milk | Stay | MB | REA |
|----------|------|----|----|-----|-----|----|-----|------|------|------|------|
| EPD | 99 | 65 | 34 | 10 | 0.1 | 63 | 102 | 19 | 16 | 0.29 | 0.09 |
| PCTL (%) | 39 | 32 | 53 | 82 | 80 | 46 | 45 | 91 | 46 | 74 | 54 |



LMG GILLS REDEMPTION 8320

04-12-2018

4098040

CER MR. REDEMPTION 41D
3566170

BROWN JYJ REDEMPTION Y1334
JRC MS 611 6227 0117X

LMG MISS CINNAMON 4201
1743575

LMG GILLS INDEED 8845
LMG MISS CINNAMON 9166

| | ProS | HB | GM | CED | BW | WW | YW | Milk | Stay | MB | REA |
|----------|------|----|----|-----|----|----|-----|------|------|------|------|
| EPD | 96 | 53 | 44 | 9 | 0 | 66 | 113 | 18 | 17 | 0.37 | 0.04 |
| PCTL (%) | 42 | 55 | 36 | 87 | 78 | 37 | 25 | 93 | 33 | 58 | 64 |



BAR M LAKOTA 9227

03-26-2019

4173410

RREDS SENECA 731C
3491307

BIEBER ROLLIN DEEP Y118
RREDS ASTER 309A

BAR M MS HORIZON 5081
3475720

PIE THE COWBOY KIND 343
BAR M MS LOGAN 3093

| | ProS | HB | GM | CED | BW | WW | YW | Milk | Stay | MB | REA |
|----------|------|----|----|-----|------|----|-----|------|------|------|-----|
| EPD | 98 | 68 | 30 | 12 | -1.2 | 70 | 112 | 23 | 18 | 0.26 | 0.3 |
| PCTL (%) | 39 | 28 | 58 | 54 | 60 | 23 | 26 | 67 | 19 | 79 | 22 |



BAR M LAKOTA 9227



BIEBER CL STOCKMARKET E119

1-15-17

3751659

PIE STOCKMAN 4051
1724236

LSF SAGA 1040Y
PIE LAKOTA 046

BIEBER CL ADELLE 475C
3474411

ANDRAS FUSION R236
BIEBER ADELLE 297Y

| | ProS | HB | GM | CED | BW | WW | YW | Milk | Stay | MB | REA |
|----------|------|----|----|-----|------|----|-----|------|------|------|------|
| EPD | 147 | 68 | 79 | 16 | -5.1 | 76 | 128 | 23 | 19 | 1.24 | 0.29 |
| PCTL (%) | 4 | 28 | 5 | 13 | 7 | 11 | 8 | 68 | 15 | 1 | 23 |



BIEBER CL STOCKMARKET E119



HXC ALLEGIANCE 5502C

2-04-15

3494126

LEACHMAN PLEDGE A282Z
1652360

LSF NEXTPECTATION 0083X
LCOC ZARA TG004

HXC 100Y
1439136

BECKTON NEBULA P P707
HXC ZIMA 338N

| | ProS | HB | GM | CED | BW | WW | YW | Milk | Stay | MB | REA |
|----------|------|----|----|-----|------|----|-----|------|------|------|------|
| EPD | 125 | 37 | 88 | 11 | -1.4 | 71 | 120 | 26 | 14 | 0.93 | 0.19 |
| PCTL (%) | 13 | 78 | 2 | 69 | 57 | 23 | 15 | 46 | 63 | 2 | 36 |



HXC ALLEGIANCE 5502C



FRITZ GRANITE 610G

01-28-2019

4169552

FRITZ GOLDEN OSCAR 8006
1255319

RED CROWFOOT OLE'S OSCAR
FRITZ REBAL 6039

FRITZ EMILY 310E
3764879

SILVEIRAS MISSION NEXUS 1378
LAZYT3 LADY ENTERPRISE 938

| | ProS | HB | GM | CED | BW | WW | YW | Milk | Stay | MB | REA |
|----------|------|----|----|-----|----|----|-----|------|------|------|------|
| EPD | 136 | 76 | 60 | 13 | 0 | 82 | 136 | 30 | 20 | 0.72 | 0.13 |
| PCTL (%) | 7 | 17 | 15 | 49 | 78 | 5 | 5 | 15 | 8 | 9 | 46 |



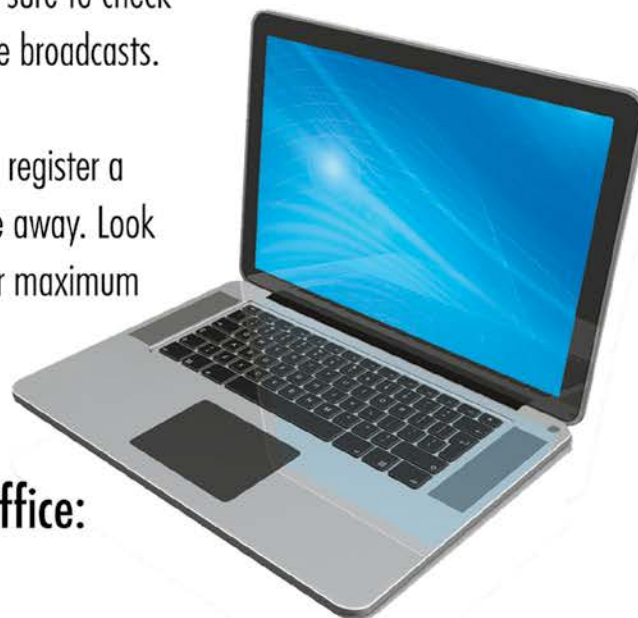
View the Auction Live! Bid Online... you're ringside right at your desk!

Buying online is as easy as 1, 2, 3...

1. Create an account at www.DVAuction.com under the "Register" tab
2. Apply for bidding approval by clicking on the "details" tab at least 24 hours prior to the auction – a DV representative will notify you once you have been approved.
3. Tune in for the sale to make your purchases!

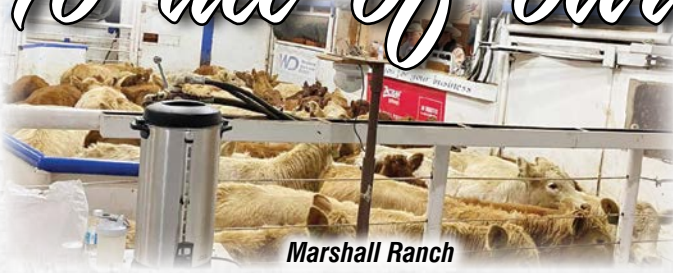
High Speed internet is required for successful bidding-be sure to check the lag-time monitor in the top left corner to ensure real-time broadcasts.

Proxy-bidding – if you can't make time to watch the sale, register a proxy bid and let our system represent your bid while you're away. Look for the "proxy bid" tab on the auction listing, and fill in your maximum bids. We'll handle the rest!



For General Questions Please contact Our Office:
402-316-5460 or support@dvauction.com

To all of our Customers...



Marshall Ranch



Circle S Ranch



Sandquist Ranch



Chance Knutson Ranch



Newling Ranch



Metzinger Ranch



Stradinger Ranch



Dean Churchill Ranch



Collins Ranch



Nemeck Ranch



Schlect Ranch



Randy Kahl Ranch



Hollibaugh Ranch



Wanner Ranch

Thank You!

"You Buy Our Bulls, We Will Bid on Your Calves"

To all of our Customers...



Gran Ranch



Robert & Eric Jones Ranch



Andrews Ranch



Archie Hulm



Cody Hooper Ranch



Bruce Ranch



Shawn Claymore Ranch



Terry Henderson Ranch



Burress Ranch



Tucker Amiotte Ranch



Jerry Nelson Ranch



Senn Ranch



Suchy Ranch



Hollenbeck Ranch



Jose Campos Ranch



Dusty Jackson



Duane Frank Ranch



Webb Ranch



Gropper Ranch



Shane Sweet Ranch



Lawrence Ranch



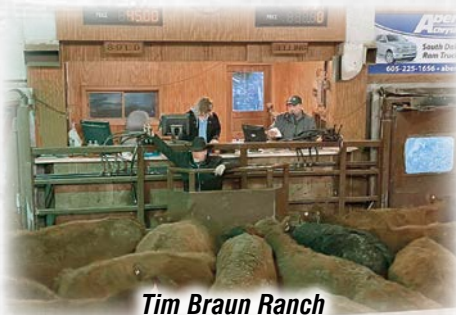
Nagel Ranch



Brian Andres Ranch



Marks Ranch



Tim Braun Ranch



Weigel Ranch

Thank You!



Gill Red Angus
13138 256th Ave.
Timber Lake, SD 57656
www.gillredangus.com



Also Selling 195 Commercial Bred Heifers



Fall Bull & Female Sale
DECEMBER 14, 2022

1:00 PM MT
At the Ranch
Timber Lake, SD

www.GillRedAngus.com